

# GRIEGER

Hydraulik

Hydraulics

Zwischenplatten-Druckminderer  
vorgesteuert

Modular pressure reducing valves,  
piloted operated

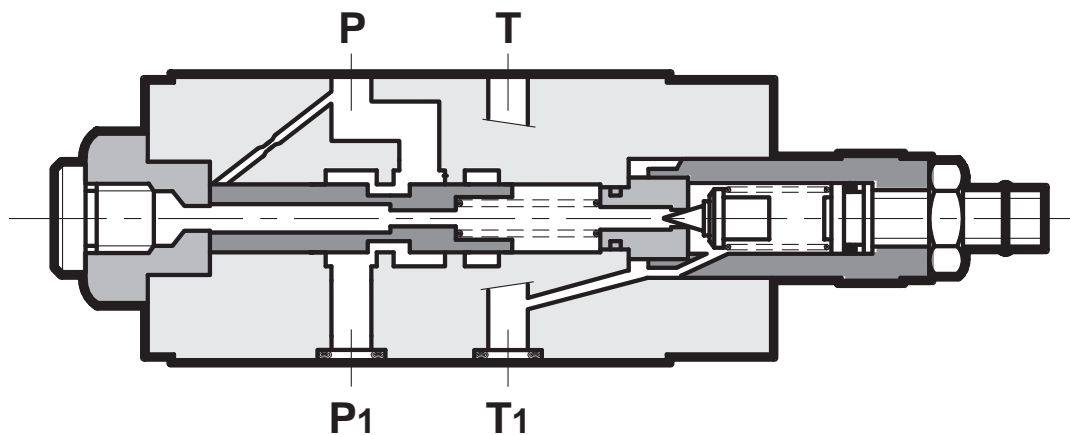
NG 10



Ausgabe  
Version 04.08

Bestnr.  
Order codes 101 018 ...

# 5.2.2.2



1. 320 bar-Version

1. 320 bar version

2. bis zu 80 l/min

2. up to 80 l/min

3. Einstellung per Schraube  
oder Handknopf

3. adjustment by screw or  
handknob

4. Bei Druckminderung in A  
oder B ist kein  
Rückschlagventil nötig, da  
die Regelung in P erfolgt

4. For pressure reducing in  
A or B, no check valve is  
required since the pressure  
control is in line P

5. Standardhöhe 50 mm

5. standard height 50 mm

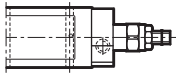
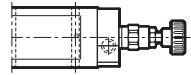
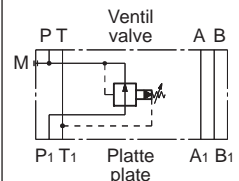
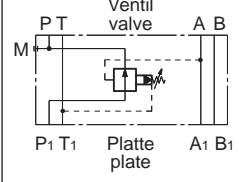
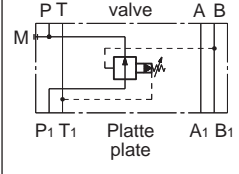
<b>Inhalt</b>	<b>Seite</b>
Typen/Bestellnummern .....	4
Kenngrößen .....	5
$\Delta p/Q$ -Kennlinien .....	6
Abmessungen .....	7
Ersatzteile .....	7

<b>Contents</b>	<b>Page</b>
Types/Order codes .....	4
Specifications .....	5
$\Delta p/Q$ -Curves .....	6
Dimensions .....	7
Spare parts .....	7

---

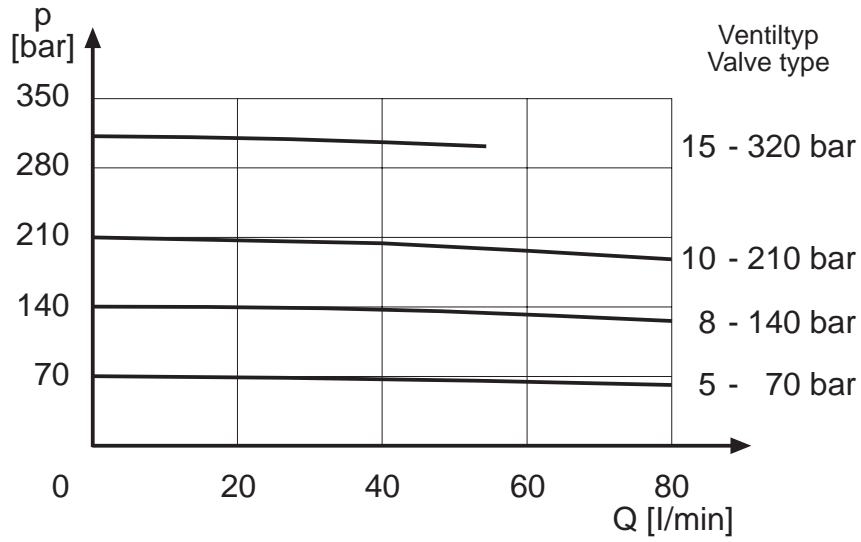
## Typen, Bestellnummern Types, order codes

Bestellnr. / Order code 101 018 ...

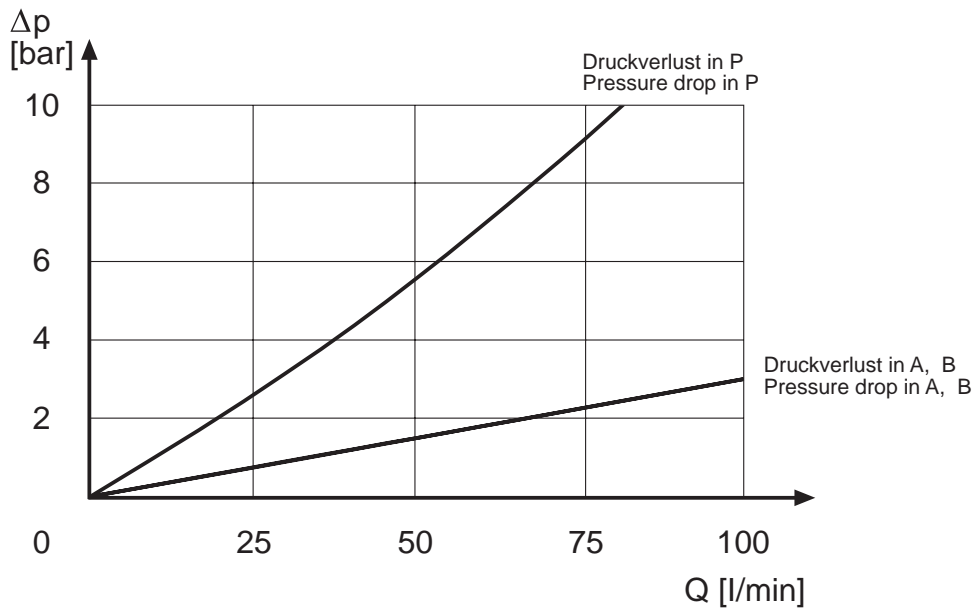
Nr.	Symbol	p (bar)		
1		5 - 70	<b>001</b>	<b>013</b>
		8 - 140	<b>002</b>	<b>014</b>
		10 - 210	<b>003</b>	<b>015</b>
		15 - 320	<b>004</b>	<b>016</b>
2		5 - 70	<b>005</b>	<b>017</b>
		8 - 140	<b>006</b>	<b>018</b>
		10 - 210	<b>007</b>	<b>019</b>
		15 - 320	<b>008</b>	<b>020</b>
3		5 - 70	<b>009</b>	<b>021</b>
		8 - 140	<b>010</b>	<b>022</b>
		10 - 210	<b>011</b>	<b>023</b>
		15 - 320	<b>012</b>	<b>024</b>

Kenngrößen	Specifications	
<b>Allgemein</b>	<b>General</b>	
Schieberventil	Spool valve	
Plattenanschluss	Subplate mounted	NG 10 - ISO 4401 / CETOP 05
Umgebungstemperatur	Ambient temperature	-20 °C to +50 °C
Gewicht:	Weight:	2.7 kg
<b>Hydraulisch</b>	<b>Hydraulic</b>	
für Hydrauliköle auf Mineralölbasis Type HL oder HM nach (andere Medien auf Anfrage)	for mineral oil based hydraulic fluids HL or HM type according to (other fluids on request)	ISO 6743-4
Viskositätsbereich	Viscosity range	10 - 400 cSt
empfohlene Viskosität	recommended viscosity	25 cSt
Zulässige Ölverschmutzungs-klasse	Fluid contamination degree	ISO 4406: 1999, Klasse / class 20/18/15
NBR-Dichtungen Standart FPM-Dichtungen auf Anfrage	NBR seals standard FPM seals on request	
Druckmitteltemperaturbereich	Fluid temperature range	-20 °C to +80 °C
Betriebsdruck	Operating pressure	max. 320 bar
Nenn-durchfluss siehe S. 6	Rated flow see page 6	
Maximaler Durchfluss Ventil	Maximum flow valve	80 l/min
Max. Durchfluss freie Leitungen	Max. flow free lines	100 l/min

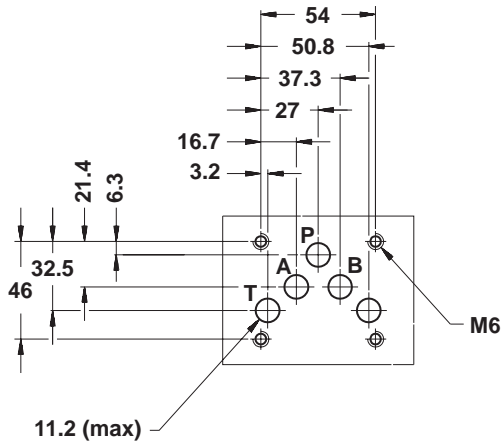
p/Q-Kennlinien  
p/Q-Curves



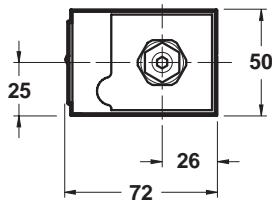
$\Delta p/Q$ -Kennlinien  
 $\Delta p/Q$ -Curves



**Lochbild**  
**Mounting interface**  
**CETOP 4.2-4-05-320**  
**ISO/CD 4401-05**

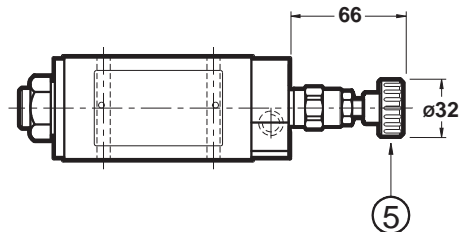
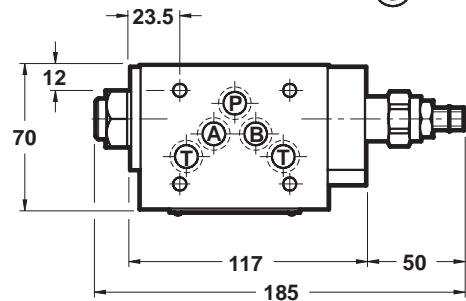
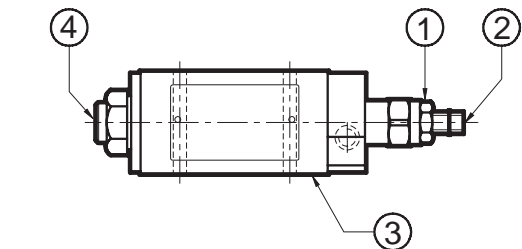


**Abmessungen**  
**Dimensions**



alle Maßangaben in mm  
 all dimensions are in mm

①	Kontermutter, Schlüsselgröße 17 Locking nut, spanner 17
②	Inbusschraube, Schlüsselgröße 5 Drehen im Uhrzeigersinn erhöht den Druck Countersunk hex screw, spanner 5 Rotate clockwise to increase pressure
③	Befestigungsflansch mit O-Ringen Mounting surface with O-rings
④	Manometersanschluss G1/4 Pressure gauge port G1/4
⑤	Handknopf Adjustment knob



**Ersatzteile**  
**Spare parts**

Bestellnr. / Order code 101 022 ...

Dichtungssatz NBR Seal Kit NBR	5 x O-Ring 2050 - 90 shore	005
Dichtungssatz FPM/Viton Seal Kit FPM/Viton	5 x O-Ring 2050 - 90 shore	006

[www.grieger-automation.com](http://www.grieger-automation.com)

**Grieger**  
Saarstr. 41  
71282 Hemmingen  
Germany

Tel: +49 7150 301 501  
Fax: +49 7150 301 502

**Grieger Asia Pte Ltd**  
2 Jurong East Street 21  
#03-152, IMM Building  
Singapore 609601

Tel: +65 6425 6562  
Fax: +65 6425 6755

### Hydraulik Produktpalette

- Wegeventile NG 6, 10, 16, 25, 32
- Proportionalventil NG 6, 10, 16, 25
- Verstärker für Proportionalventile
- Modularventile NG 6, 10, 16
- Druckventile NG 6, 10, 16, 25 und Rohrleitungseinbau
- DIN-Einbauventile NG 10, 16, 25, 32, 40, 50, 63
- Anschlussplatten NG 6, 10, 16, 25, 32
- Zahnradpumpen Größe 2, 4-30 cm<sup>3</sup>/U
- Kugelhähne
- Drosselventile
- Rückschlagventile

### Hydraulic product range

- Directional control valves NG 6, 10, 16, 25, 32
- Proportional valves NG 6, 10, 16, 25
- Amplifiers for proportional valves
- Modular valves NG 6, 10, 16
- Pressure valves NG 6, 10, 16, 25 and inline mounting
- DIN cartridge valves NG 10, 16, 25, 32, 40, 50, 63
- Subplates NG 6, 10, 16, 25, 32
- Gear pumps size 2, 4-30 ccm/rev
- Ball valves
- Needle valves
- Check valves

Ihr Vertragspartner  
Your authorized distributor