

# GRIEGER

Hydraulik

Hydraulics

Zwischenplatten-Druckminderer  
direkt gesteuert, 3-Wege

Modular pressure reducing valves,  
direct operated, 3-way

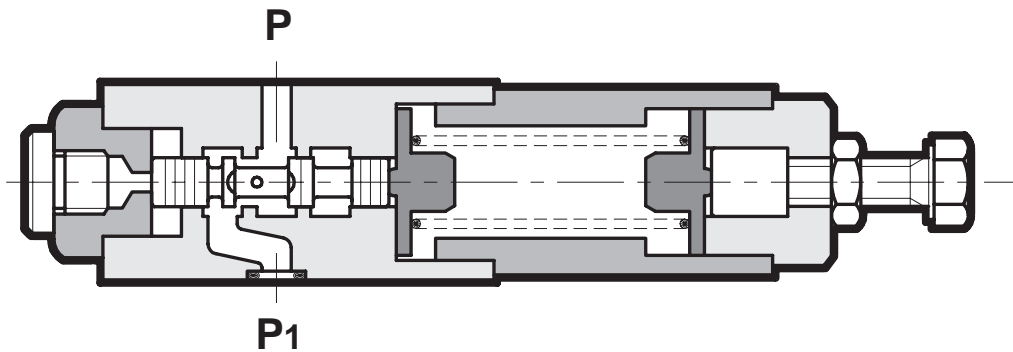
NG 6



Ausgabe  
Version 04.08

Bestnr.  
Order codes 101 013 ...

# 5.2.1.1



1. 350 bar-Version

2. bis zu 50 l/min

3. Einstellung per Schraube oder Handknopf

4. 3-Wege-Bauart vermeidet Druckaufbau durch äußere Kräfte

5. Bei Druckminderung in A oder B ist kein Rückschlagventil nötig, da die Regelung in P erfolgt

6. Standardhöhe 40 mm

1. 350 bar version

2. up to 50 l/min

3. adjustment by screw or handknob

4. 3-way design avoids pressure increase by external forces

5. For pressure reducing in A or B, no check valve is required since the pressure control is in line P

6. standard height 40 mm

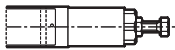
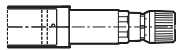
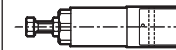
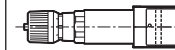
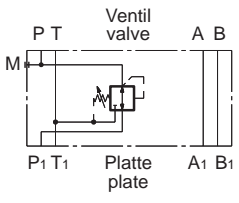
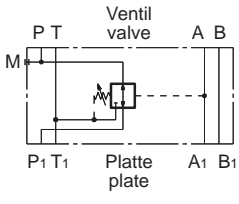
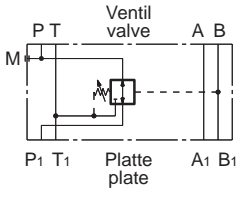
<b>Inhalt</b>	<b>Seite</b>
Typen/Bestellnummern .....	4
Kenngrößen .....	5
$\Delta p/Q$ -Kennlinien .....	6
Abmessungen .....	7
Ersatzteile .....	7

<b>Contents</b>	<b>Page</b>
Types/Order codes .....	4
Specifications .....	5
$\Delta p/Q$ -Curves .....	6
Dimensions .....	7
Spare parts .....	7

---

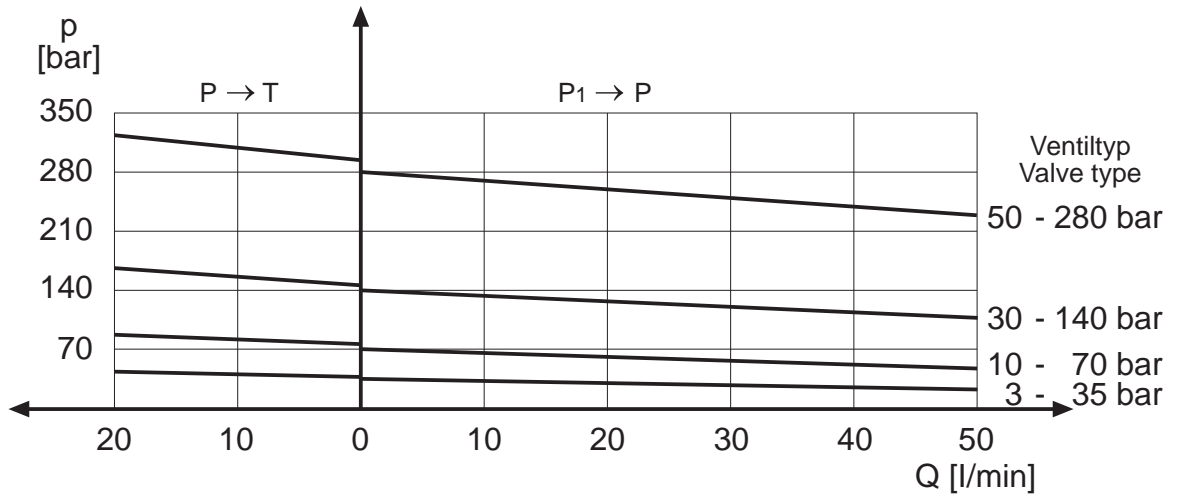
## Typen, Bestellnummern Types, order codes

Bestellnr. / Order code 101 013 ...

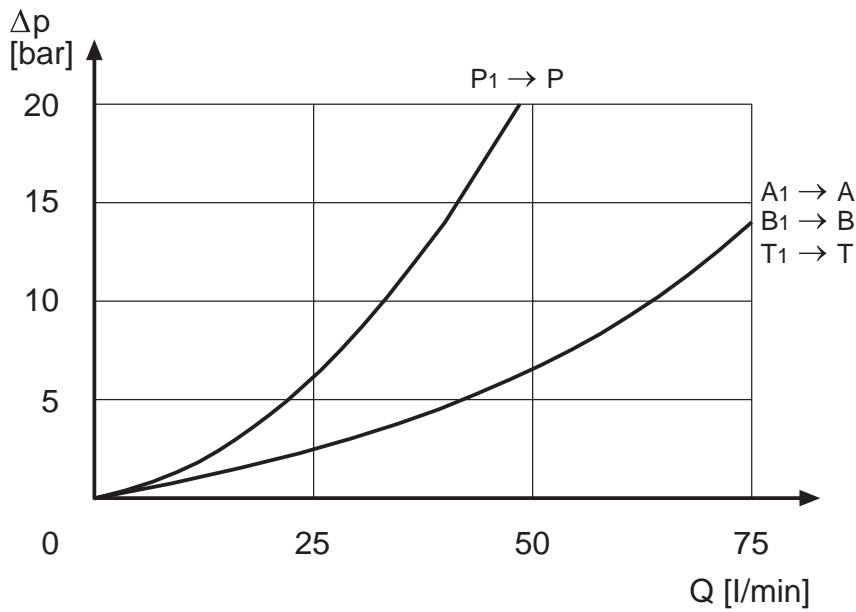
Nr.	Symbol	p (bar)				
1		3 - 35	<b>001</b>	<b>013</b>	<b>025</b>	<b>037</b>
		10 - 70	<b>002</b>	<b>014</b>	<b>026</b>	<b>038</b>
		30 - 140	<b>003</b>	<b>015</b>	<b>027</b>	<b>039</b>
		50 - 280	<b>004</b>	<b>016</b>	<b>028</b>	<b>040</b>
2		3 - 35	<b>005</b>	<b>017</b>	<b>029</b>	<b>041</b>
		10 - 70	<b>006</b>	<b>018</b>	<b>030</b>	<b>042</b>
		30 - 140	<b>007</b>	<b>019</b>	<b>031</b>	<b>043</b>
		50 - 280	<b>008</b>	<b>020</b>	<b>032</b>	<b>044</b>
3		3 - 35	<b>009</b>	<b>021</b>	<b>033</b>	<b>045</b>
		10 - 70	<b>010</b>	<b>022</b>	<b>034</b>	<b>046</b>
		30 - 140	<b>011</b>	<b>023</b>	<b>035</b>	<b>047</b>
		50 - 280	<b>012</b>	<b>024</b>	<b>036</b>	<b>048</b>

Kenngrößen	Specifications	
<b>Allgemein</b>	<b>General</b>	
Schieberventil	Spool valve	
Plattenanschluss	Subplate mounted	NG 6 - ISO 4401 / CETOP 03
Umgebungstemperatur	Ambient temperature	-20 °C to +50 °C
Gewicht:	Weight:	1.4 kg
<b>Hydraulisch</b>	<b>Hydraulic</b>	
für Hydrauliköle auf Mineralölbasis Type HL oder HM nach (andere Medien auf Anfrage)	for mineral oil based hydraulic fluids HL or HM type according to (other fluids on request)	ISO 6743-4
Viskositätsbereich	Viscosity range	10 - 400 cSt
empfohlene Viskosität	recommended viscosity	25 cSt
Zulässige Ölverschmutzungs-klasse	Fluid contamination degree	ISO 4406: 1999, Klasse / class 20/18/15
NBR-Dichtungen Standart FPM-Dichtungen auf Anfrage	NBR seals standard FPM seals on request	
Druckmitteltemperaturbereich	Fluid temperature range	-20 °C to +80 °C
Betriebsdruck P, A, B	Operating pressure P, A, B	max. 350 bar
Betriebsdruck T	Operating pressure T	max. 10 bar
Nenn-durchfluss siehe S. 6	Rated flow see page 6	
Maximaler Durchfluss Ventil	Maximum flow valve	50 l/min
Max. Durchfluss freie Leitungen	Max. flow free lines	75 l/min
Leckölstrom	Drain flow rate	≤ 0.08 l/min

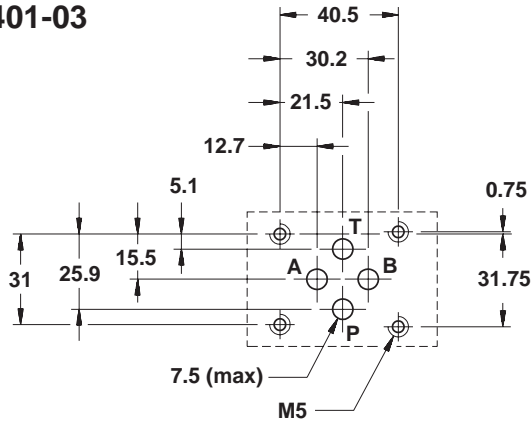
p/Q-Kennlinien  
p/Q-Curves



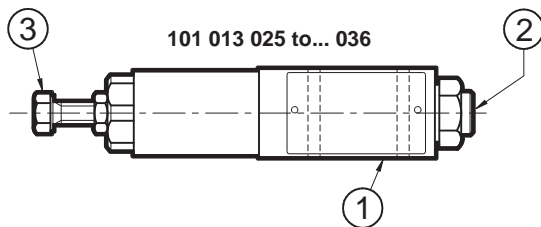
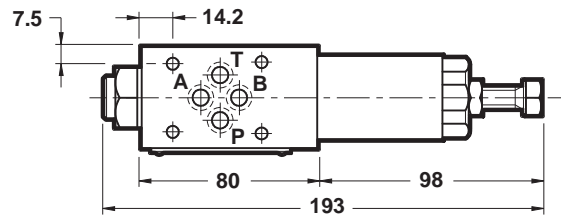
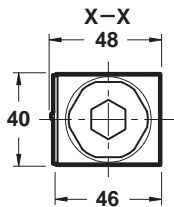
$\Delta p/Q$ -Kennlinien  
 $\Delta p/Q$ -Curves



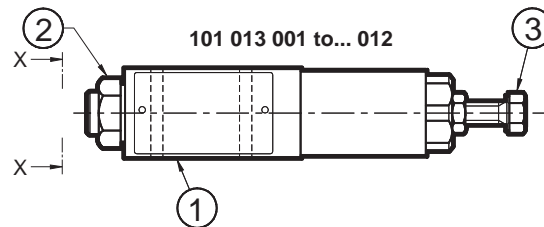
**Lochbild**  
**Mounting interface**  
**CETOP 4.2-4-03-350**  
**ISO/CD 4401-03**



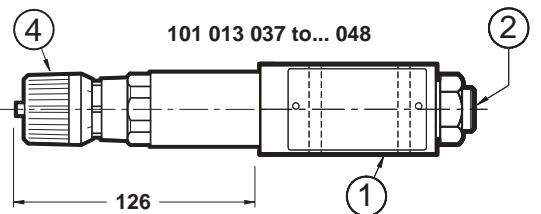
**Abmessungen**  
**Dimensions**



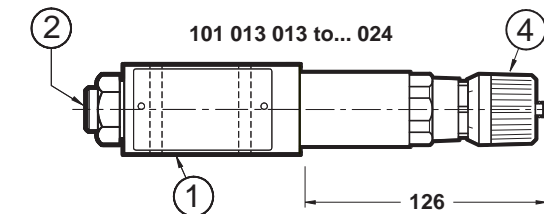
101 013 025 to... 036



101 013 001 to... 012



101 013 037 to... 048



101 013 013 to... 024

alle Maßangaben in mm  
 all dimensions are in mm

①	Befestigungsflansch mit O-Ringen / Mounting surface with O-rings
②	Manometersanschluss G1/4 / Pressure gauge port G1/4
③	Fixierschraube. Schlüsselgröße 17 Durch Drehen im Uhrzeigersinn wird der Druck erhöht Hexagonal head adjustment screw, spanner 17 Rotate clockwise to increase pressure
④	SICBLOC-Knopf, gleichzeitig drücken und drehen SICBLOC Knob, push and rotate at the same time

**Ersatzteile**  
**Spare parts**

Bestellnr. / Order code 101 022 ...

Dichtungssatz NBR Seal Kit NBR	4 x O-Ring 2037 - 90 shore	001
Dichtungssatz FPM/Viton Seal Kit FPM/Viton	4 x O-Ring 2037 - 90 shore	002

[www.grieger-automation.com](http://www.grieger-automation.com)

**Grieger**  
Saarstr. 41  
71282 Hemmingen  
Germany

Tel: +49 7150 301 501  
Fax: +49 7150 301 502

**Grieger Asia Pte Ltd**  
2 Jurong East Street 21  
#03-152, IMM Building  
Singapore 609601

Tel: +65 6425 6562  
Fax: +65 6425 6755

### Hydraulik Produktpalette

- Wegeventile NG 6, 10, 16, 25, 32
- Proportionalventil NG 6, 10, 16, 25
- Verstärker für Proportionalventile
- Modularventile NG 6, 10, 16
- Druckventile NG 6, 10, 16, 25 und Rohrleitungseinbau
- DIN-Einbauventile NG 10, 16, 25, 32, 40, 50, 63
- Anschlussplatten NG 6, 10, 16, 25, 32
- Zahnradpumpen Größe 2, 4-30 cm<sup>3</sup>/U
- Kugelhähne
- Drosselventile
- Rückschlagventile

### Hydraulic product range

- Directional control valves NG 6, 10, 16, 25, 32
- Proportional valves NG 6, 10, 16, 25
- Amplifiers for proportional valves
- Modular valves NG 6, 10, 16
- Pressure valves NG 6, 10, 16, 25 and inline mounting
- DIN cartridge valves NG 10, 16, 25, 32, 40, 50, 63
- Subplates NG 6, 10, 16, 25, 32
- Gear pumps size 2, 4-30 ccm/rev
- Ball valves
- Needle valves
- Check valves

Ihr Vertragspartner  
Your authorized distributor