

GRIEGER

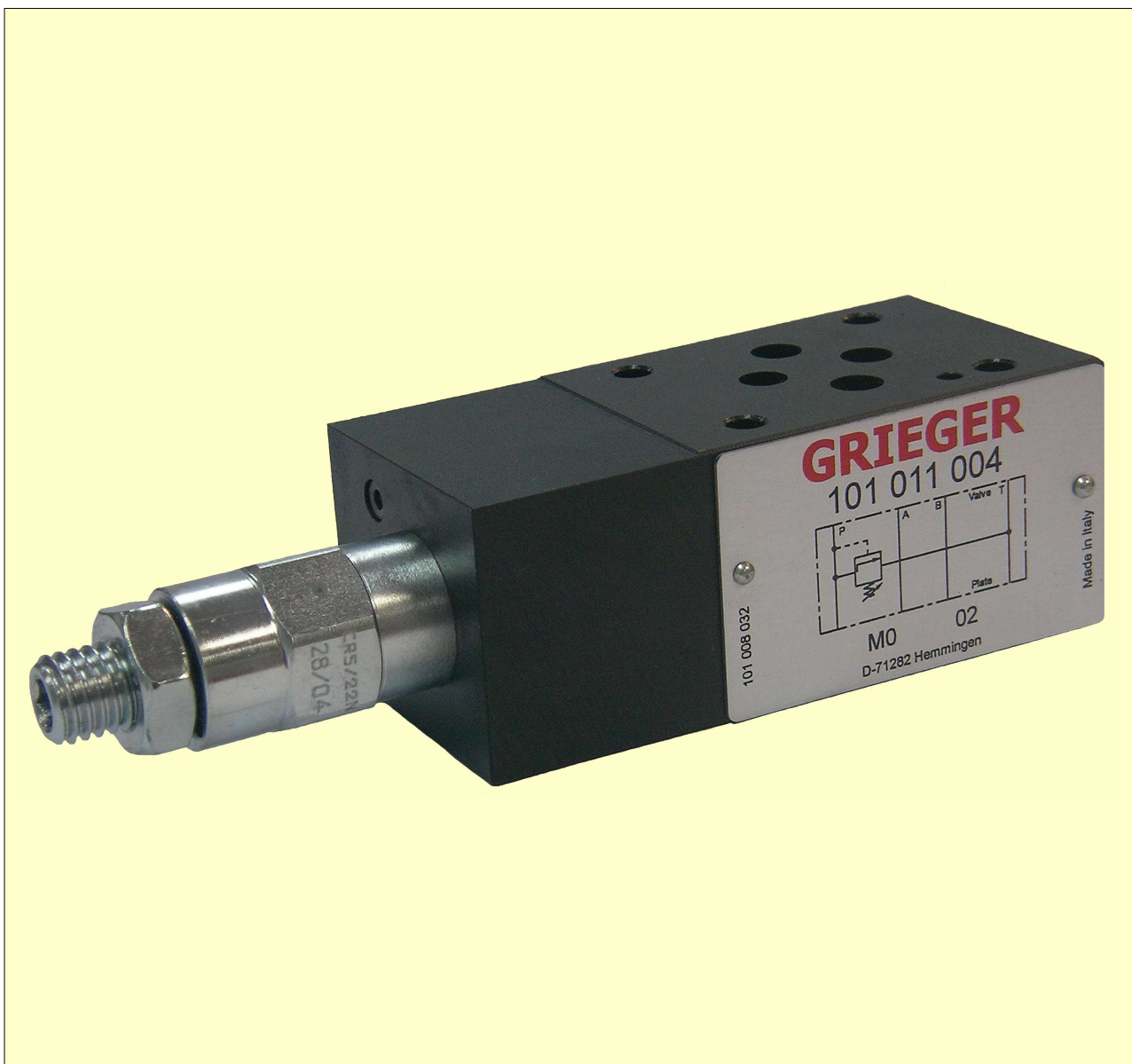
Hydraulik

Hydraulics

Zwischenplatten-Druckbegrenzungsventile,
direkt gesteuert

Modular pressure relief valves,
direct operated

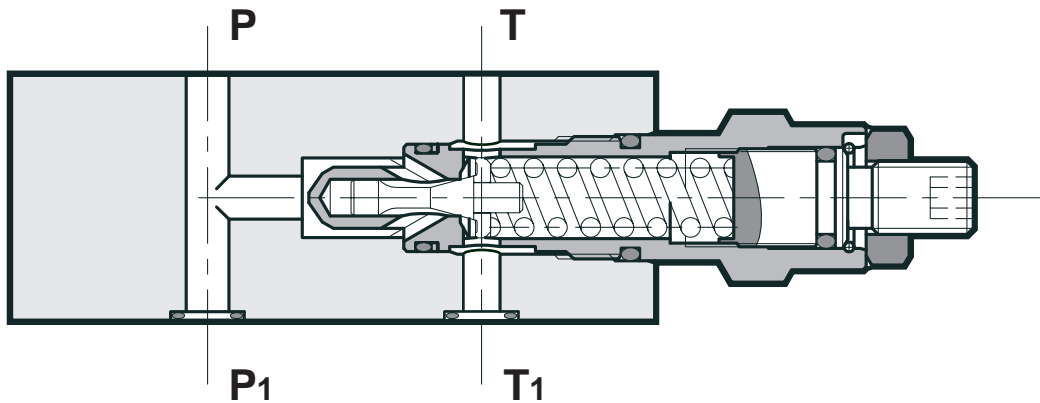
NG 6



Ausgabe
Version 04.08

Bestnr.
Order codes 101 011 ...

5.1.1.1



1. 350 bar-Version

2. bis zu 50 l/min

3. Einstellung per Schraube
oder Handknopf

4. Vermeidung von
Druckspitzen

5. Standardhöhe 40 mm

1. 350 bar version

2. up to 50 l/min

3. adjustment by screw or
handknob

4. absorbs pressure peaks

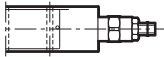
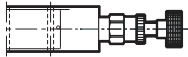
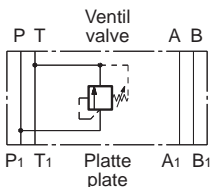
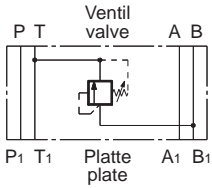
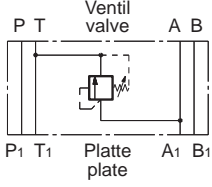
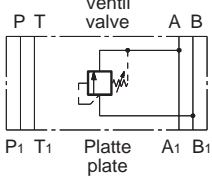
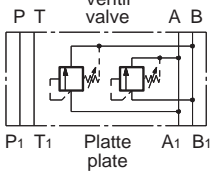
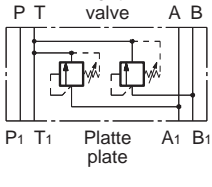
5. standard height 40 mm

| Inhalt | Seite |
|--------------------------------|--------------|
| Typen/Bestellnummern | 4 |
| Kenngrößen | 5 |
| $\Delta p/Q$ -Kennlinien | 6 |
| Abmessungen | 7 |
| Ersatzteile | 7 |

| Contents | Page |
|----------------------------|-------------|
| Types/Order codes | 4 |
| Specifications | 5 |
| $\Delta p/Q$ -Curves | 6 |
| Dimensions | 7 |
| Spare parts | 7 |

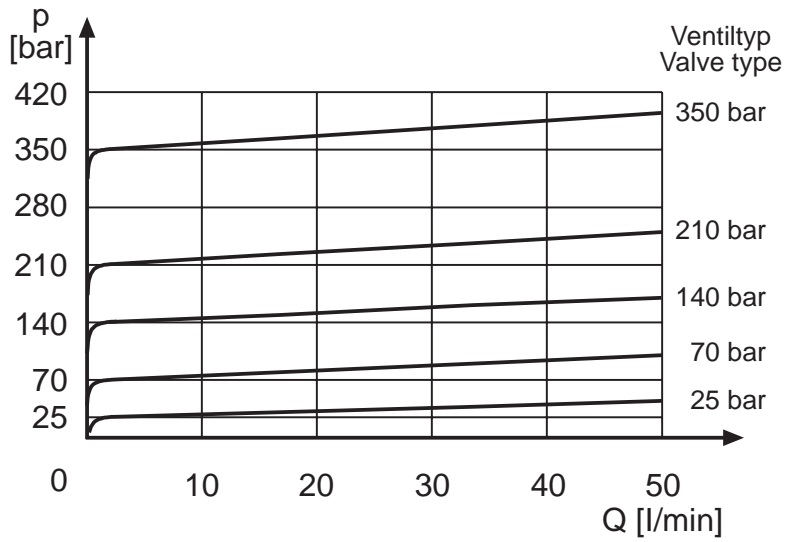
Typen, Bestellnummern Types, order codes

Bestellnr. / Order code 101 011 ...

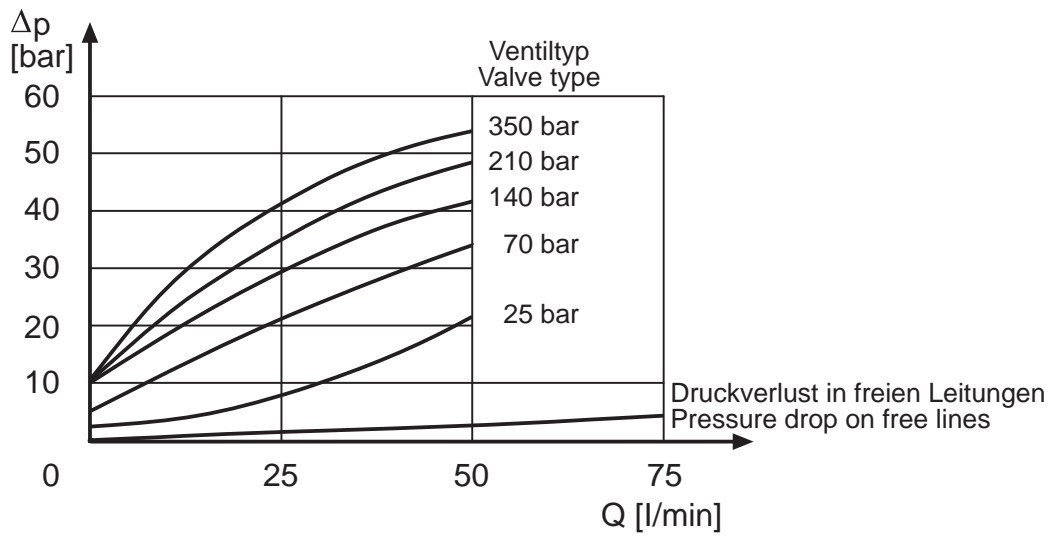
| Nr. | Symbol | p (bar) |  |  |
|-----|---|---------|--|---|
| 1 |  | 25 | 001 | 031 |
| | | 70 | 002 | 032 |
| | | 140 | 003 | 033 |
| | | 210 | 004 | 034 |
| | | 350 | 005 | 035 |
| 2 |  | 25 | 006 | 036 |
| | | 70 | 007 | 037 |
| | | 140 | 008 | 038 |
| | | 210 | 009 | 039 |
| | | 350 | 010 | 040 |
| 3 |  | 25 | 011 | 041 |
| | | 70 | 012 | 042 |
| | | 140 | 013 | 043 |
| | | 210 | 014 | 044 |
| | | 350 | 015 | 045 |
| 4 |  | 25 | 016 | 046 |
| | | 70 | 017 | 047 |
| | | 140 | 018 | 048 |
| | | 210 | 019 | 049 |
| | | 350 | 030 | 050 |
| 5 |  | 25 | 021 | 051 |
| | | 70 | 022 | 052 |
| | | 140 | 023 | 053 |
| | | 210 | 024 | 054 |
| | | 350 | 025 | 055 |
| 6 |  | 25 | 026 | 056 |
| | | 70 | 027 | 057 |
| | | 140 | 028 | 058 |
| | | 210 | 029 | 059 |
| | | 350 | 020 | 060 |

| Kenngrößen | Specifications | |
|--|---|---|
| Allgemein | General | |
| Sitzventil | Seat valve | |
| Plattenanschluss | Subplate mounted | NG 6 - ISO 4401 / CETOP 03 |
| Umgebungstemperatur | Ambient temperature | -20 °C to +50 °C |
| Gewicht: | Weight: | |
| Symbol 1 - 4 | Symbol 1 - 4 | 1.4 kg |
| Symbol 5, 6 | Symbol 5, 6 | 2.0 kg |
| Hydraulisch | Hydraulic | |
| für Hydrauliköle auf Mineralölbasis Type HL oder HM nach (andere Medien auf Anfrage) | for mineral oil based hydraulic fluids HL or HM type according to (other fluids on request) | ISO 6743-4 |
| Viskositätsbereich | Viscosity range | 10 - 400 cSt |
| empfohlene Viskosität | recommended viscosity | 25 cSt |
| Zulässige Ölverschmutzungs-klasse | Fluid contamination degree | ISO 4406: 1999, Klasse / class 20/18/15 |
| NBR-Dichtungen Standard FPM-Dichtungen auf Anfrage | NBR seals standard FPM seals on request | |
| Druckmitteltemperaturbereich | Fluid temperature range | -20 °C to +80 °C |
| Betriebsdruck | Operating pressure | max. 350 bar |
| Nenn-durchfluss siehe S. 6 | Rated flow see page 6 | |
| Maximaler Durchfluss Ventil | Maximum flow valve | 50 l/min |
| Max. Durchfluss freie Leitungen | Max. flow free lines | 75 l/min |

p/Q-Kennlinien p/Q-Curves

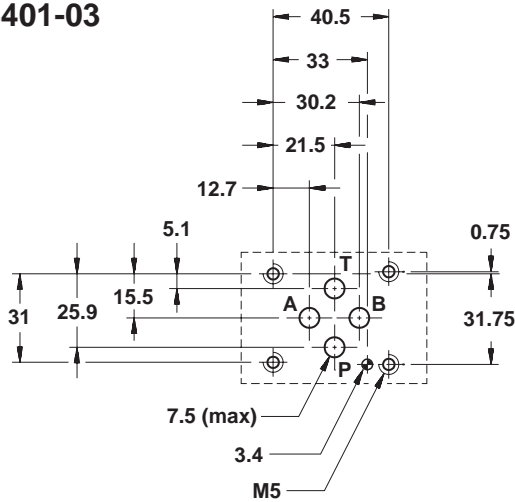


$\Delta p/Q$ -Kennlinien* $\Delta p/Q$ -Curves*

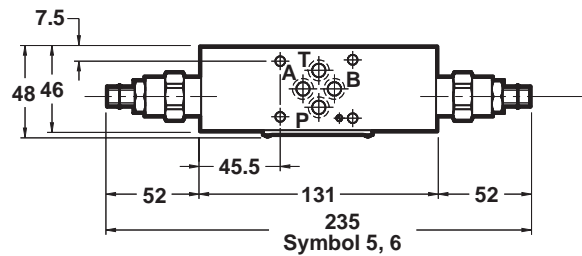
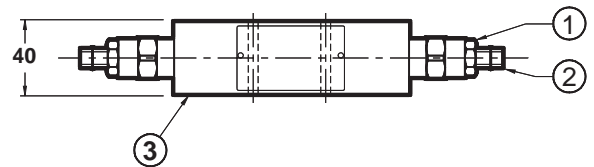
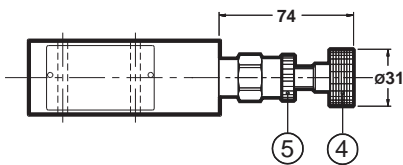
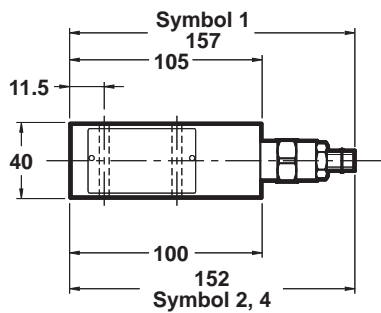
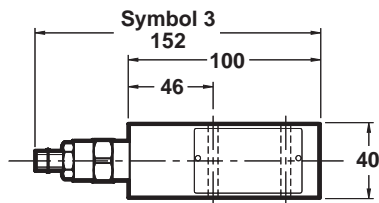


*Druckverlust bei min. Druckeinstellung
*Pressure drop at minimum pressure setting

Lochbild
Mounting interface
CETOP 4.2-4-03-350
ISO/CD 4401-03



Abmessungen
Dimensions



alle Maßangaben in mm
 all dimensions are in mm

| | |
|---|--|
| ① | Kontermutter, Schlüsselgröße 19 Locking nut, spanner 19 |
| ② | Inbusschraube, Schlüsselgröße 6 Drehen im Uhrzeigersinn erhöht den Druck. Countersunk hex screw, spanner 6 Rotate clockwise to increase pressure. |
| ③ | Befestigungsflansch mit O-Ringen Mounting surface with O-rings |
| ④ | Handknopf Adjustment knob |
| ⑤ | Kontermutter, gerändelt Locking ring |

Ersatzteile
Spare parts

Bestellnr. / Order code 101 022 ...

| | | |
|---|----------------------------|-----|
| Dichtungssatz NBR Seal Kit NBR | 4 x O-Ring 2037 - 90 shore | 001 |
| Dichtungssatz FPM/Viton Seal Kit FPM/Viton | 4 x O-Ring 2037 - 90 shore | 002 |

www.grieger-automation.com

Grieger
Saarstr. 41
71282 Hemmingen
Germany

Tel: +49 7150 301 501
Fax: +49 7150 301 502

Grieger Asia Pte Ltd
2 Jurong East Street 21
#03-152, IMM Building
Singapore 609601

Tel: +65 6425 6562
Fax: +65 6425 6755

Hydraulik Produktpalette

- Wegeventile NG 6, 10, 16, 25, 32
- Proportionalventil NG 6, 10, 16, 25
- Verstärker für Proportionalventile
- Modularventile NG 6, 10, 16
- Druckventile NG 6, 10, 16, 25 und Rohrleitungseinbau
- DIN-Einbauventile NG 10, 16, 25, 32, 40, 50, 63
- Anschlussplatten NG 6, 10, 16, 25, 32
- Zahnradpumpen Größe 2, 4-30 cm³/U
- Kugelhähne
- Drosselventile
- Rückschlagventile

Hydraulic product range

- Directional control valves NG 6, 10, 16, 25, 32
- Proportional valves NG 6, 10, 16, 25
- Amplifiers for proportional valves
- Modular valves NG 6, 10, 16
- Pressure valves NG 6, 10, 16, 25 and inline mounting
- DIN cartridge valves NG 10, 16, 25, 32, 40, 50, 63
- Subplates NG 6, 10, 16, 25, 32
- Gear pumps size 2, 4-30 ccm/rev
- Ball valves
- Needle valves
- Check valves

Ihr Vertragspartner
Your authorized distributor