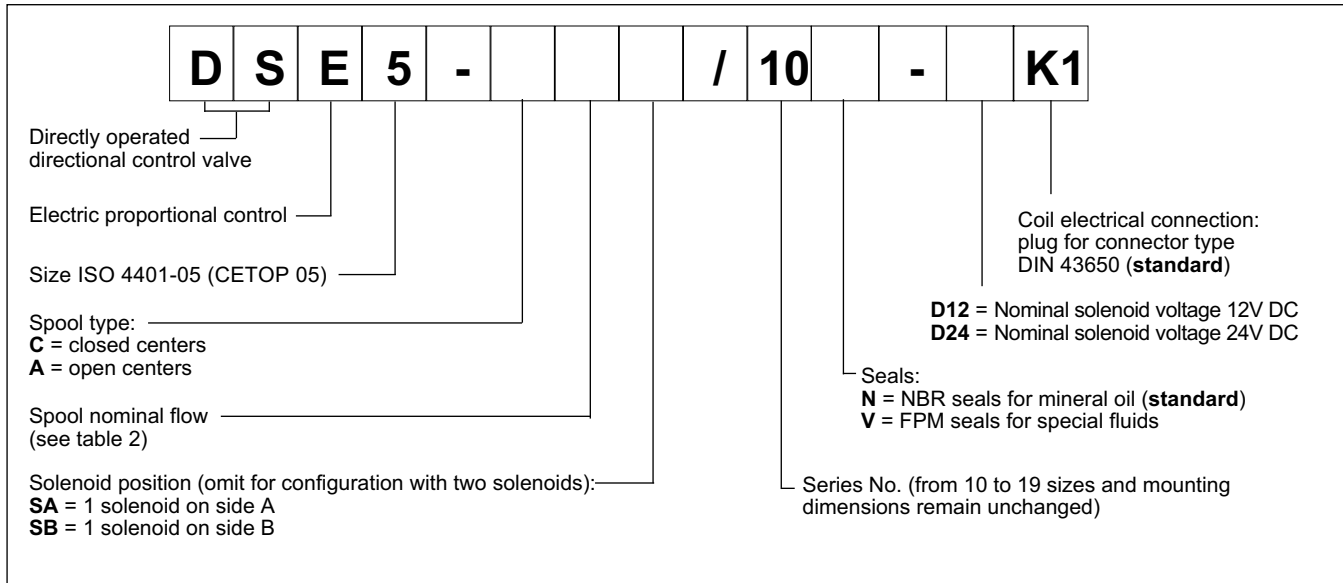




1 - IDENTIFICATION CODE



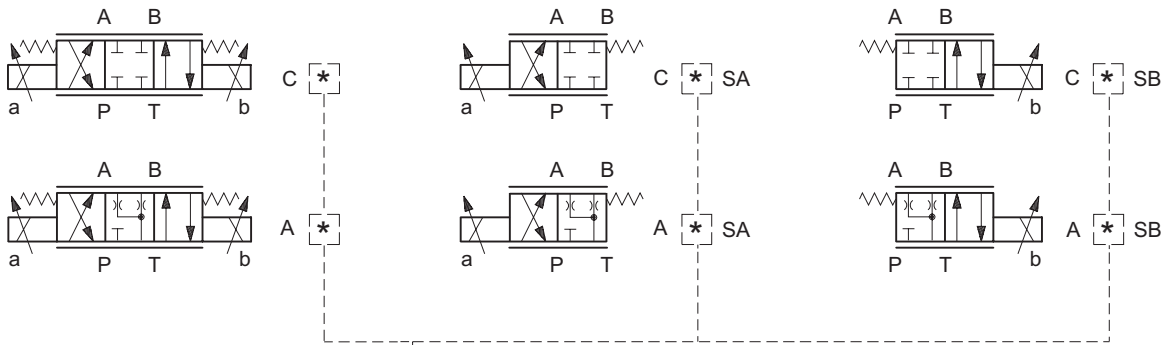
2 - CONFIGURATIONS

Valve configuration depends on the combination of the following elements:
number of proportional solenoids, spool type, nominal flow rate.

2 solenoids configuration:
3 positions with spring centering

"SA" configuration: 1 solenoid on side A.
2 positions (central + external) with spring centering

"SB" configuration: 1 solenoid on side B.
2 positions (central + external) with spring centering



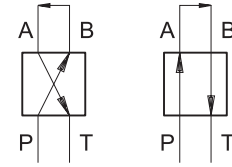
*	Controlled flow with Δp 10 bar P-T
30	30 l/min
60	60 l/min
60/30	60 (P-A) / 30 (B-T) l/min



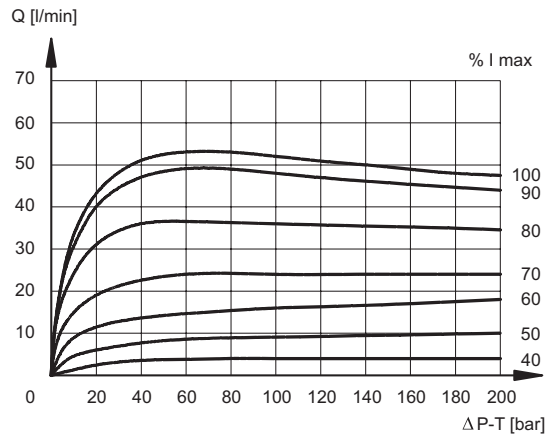
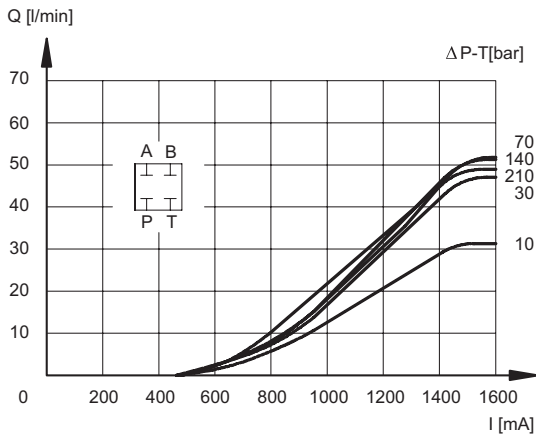
3 - CHARACTERISTIC CURVES (values measured with viscosity of 36 cSt at 50°C with valves connected to the relative electronic control units)

Typical constant flow rate control curves at Δp according to current supply to solenoid (D24 version, maximum current 1600 mA), measured for the various spool types available.

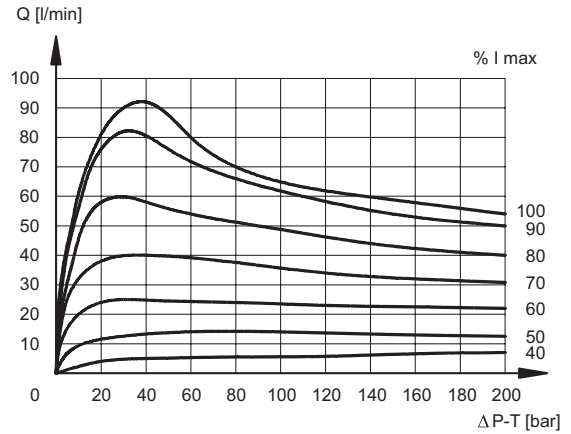
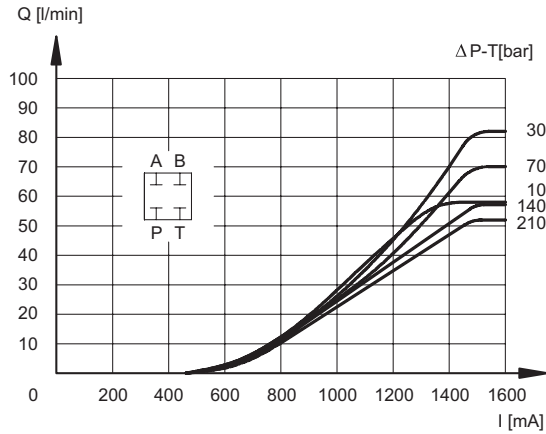
The reference Δp values are measured between ports P and T on the valve.



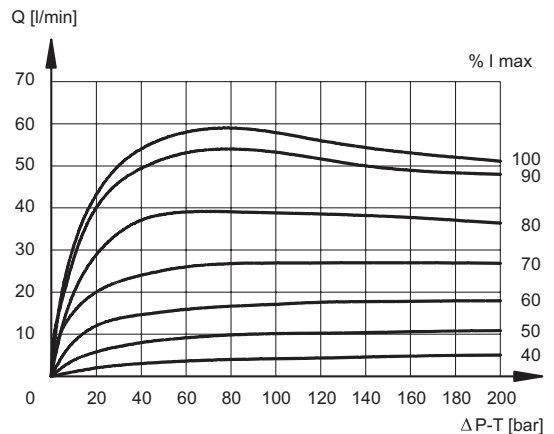
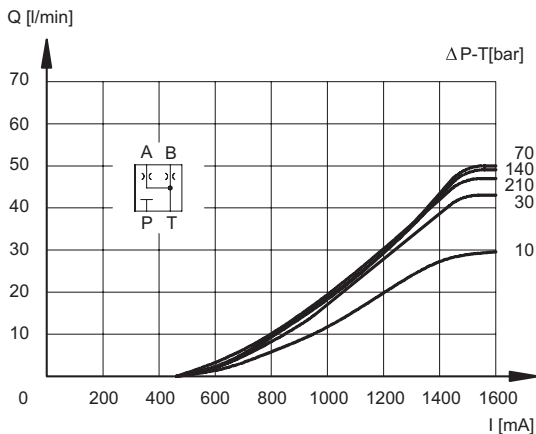
SPOOL TYPE C30



SPOOL TYPE C60

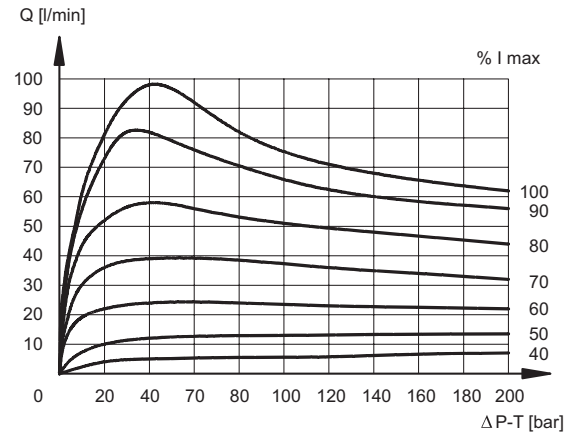
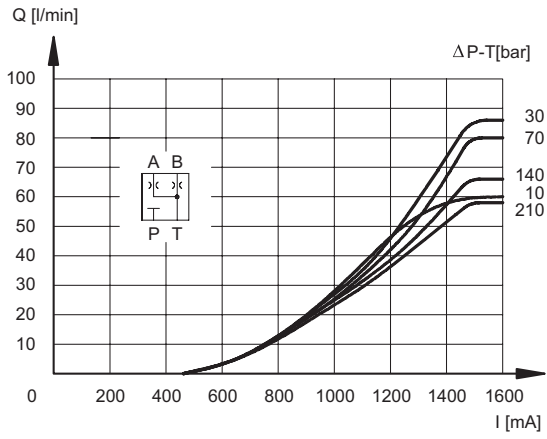


SPOOL TYPE A30





SPOOL TYPE A60





4 - HYDRAULIC FLUIDS

Use mineral oil-based hydraulic fluids HL or HM type, according to ISO 6743-4. For these fluids, use NBR seals (code N).
 For fluids HFDR type (phosphate esters) use FPM seals (code V).
 For the use of other fluid types such as HFA, HFB, HFC, please consult our technical department.
 Using fluids at temperatures higher than 80 °C causes a faster degradation of the fluid and of the seals characteristics.
 The fluid must be preserved in its physical and chemical characteristics.

5 - ELECTRICAL CHARACTERISTICS

Proportional solenoid

The proportional solenoid comprises two parts: tube and coil.
 The tube, screwed to the valve body, contains the armature which is designed to maintain friction to a minimum thereby reducing hysteresis.
 The coil is mounted on the tube secured by means of a lock nut.
 It can be rotated through 360° depending on installation clearances.

NOMINAL VOLTAGE	V DC	12	24
RESISTANCE (at 20°C)	Ω	3 - 3.4	8.65
MAXIMUM CURRENT	A	2.6	1.6
DUTY CYCLE		100%	
ELECTROMAGNETIC COMPATIBILITY (EMC)		According to 89/336 CEE	
emissions	EN 50081-1		
immunity	EN 50082-2		
CLASS OF PROTECTION: Atmospheric agents (CEI EN 60529)		IP 65	

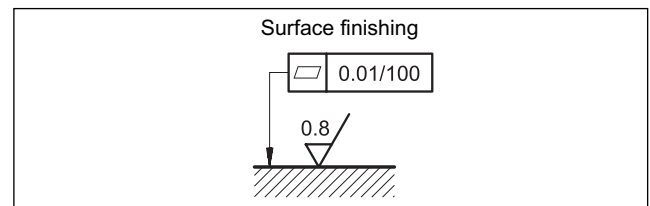
6 - STEP RESPONSE (measured with mineral oil with viscosity of 36 cSt at 50°C with the relative electronic control units)

Step response is the time taken for the valve to reach 90% of the set pressure value following a step change of reference signal.
 The table shows typical response times tested with spool type C60 and $\Delta p = 20$ bar P-T.

REFERENCE SIGNAL STEP	0 → 100%	100 → 0%
Step response [ms] DSE5-A* DSE5-C*	50	70

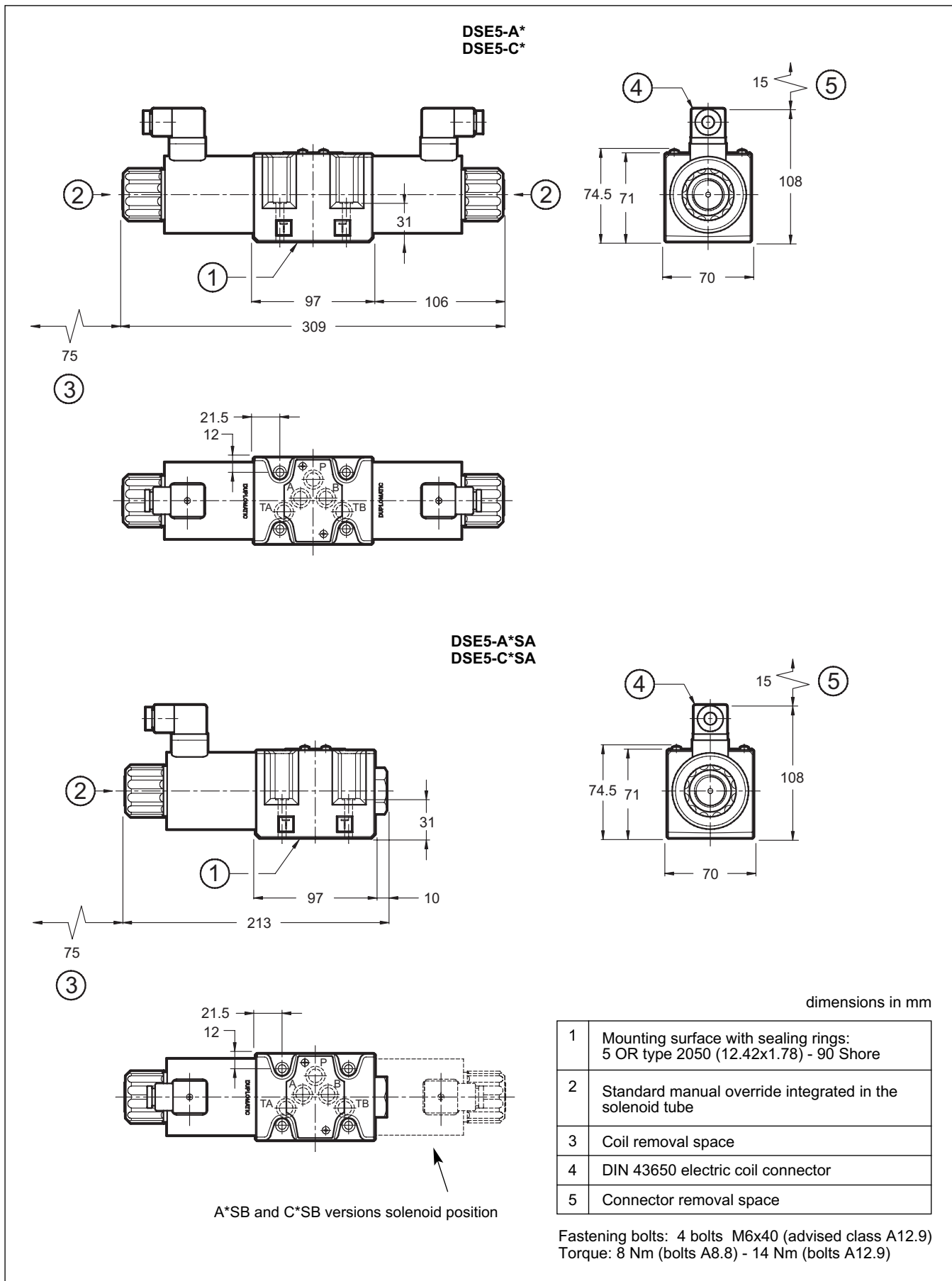
7 - INSTALLATION

DSE5 valves can be installed in any position without impairing correct operation.
 Ensure that there is no air in the hydraulic circuit.
 Valves are fixed by means of screws or tie rods on a flat surface with planarity and roughness equal to or better than those indicated in the relative symbols. If minimum values are not observed fluid can easily leak between the valve and support surface.





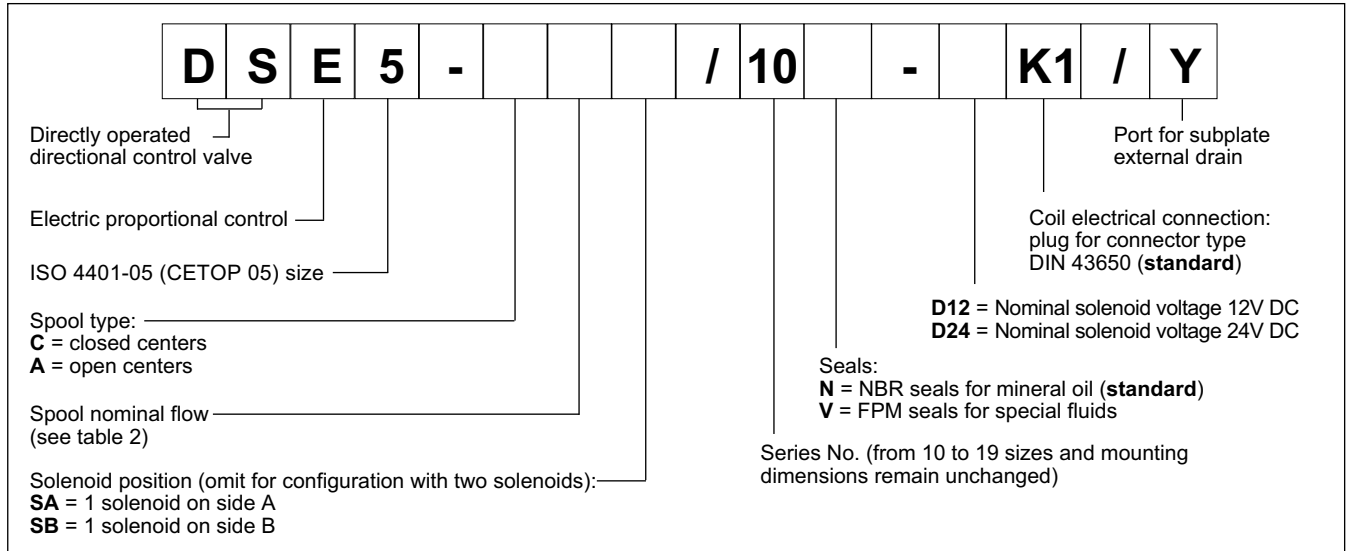
8 - OVERALL AND MOUNTING DIMENSIONS





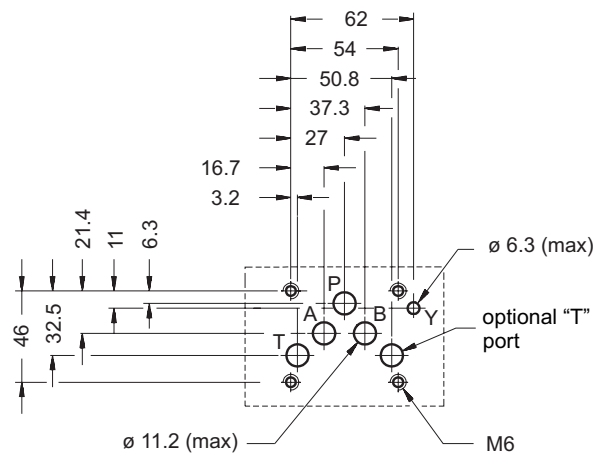
9 - SPECIAL VERSION WITH Y EXTERNAL SUBPLATE DRAIN PORT

Identification Code



This version allows the operation with pressures up to 320 bar on the valve T port.

It is a drain port Y realized on the valve mounting interface in compliance with ISO 4401-05-05-0-94 (CETOP 4.2-4-R05). The Y port is connected with the solenoid chamber: in this way the tubes are not stressed by the pressure operating on the valve T port.





10 - ELECTRONIC CONTROL UNITS

DSE5- **SA (SB)

EDM-M131	for solenoid 24V DC	DIN EN 50022 rail mounting	see cat. 89 250
EDM-M151	for solenoid 12V DC		

DSE5- A* DSE5-C*

EDM-M231	for solenoid 24V DC	DIN EN 50022 rail mounting	see cat. 89 250
EDM-M251	for solenoid 12V DC		

11 - SUBPLATES (see cat. 51 000)

Type PMD4-AL4G with rear ports 1/2" BSP
Type PMD4-AL4G with side ports 1/2" BSP

 DIPLOMATIC HYDRAULICS	DIPLOMATIC OLEODINAMICA SpA 20025 LEGNANO (MI) - P.le Bozzi, 1 / Via Edison Tel. 0331/472111 - Fax 0331/548328	
--------------------------------------	---	--