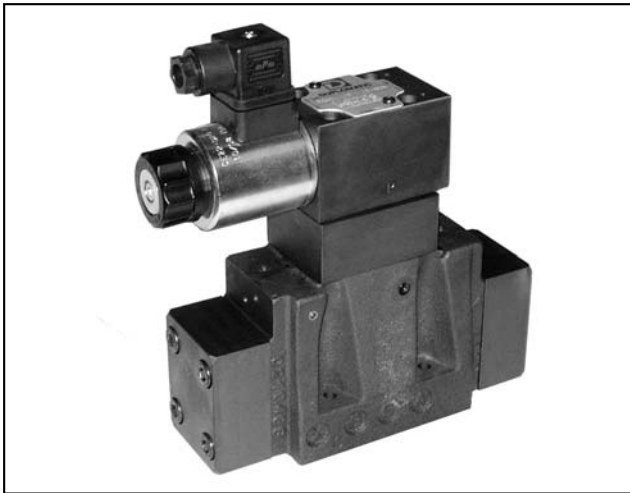




**DIPLOMATIC**  
HYDRAULICS

81 600/108 ED



# DZCE\*

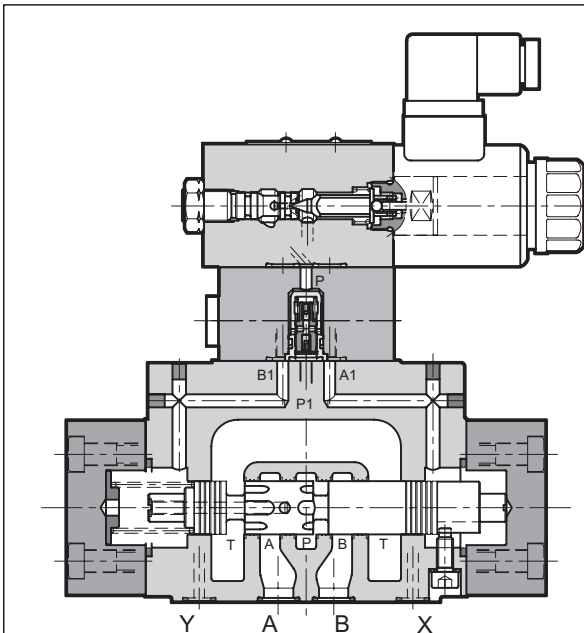
## BALANCING VALVE WITH PROPORTIONAL CONTROL

### SERIES 10

**DZCE5**                    **CETOP P05**  
**DZCE7**                    **ISO 4401-07 (CETOP 07)**  
**DZCE8**                    **ISO 4401-08 (CETOP 08)**

**p** max **350** bar  
**Q** max (see table of performances)

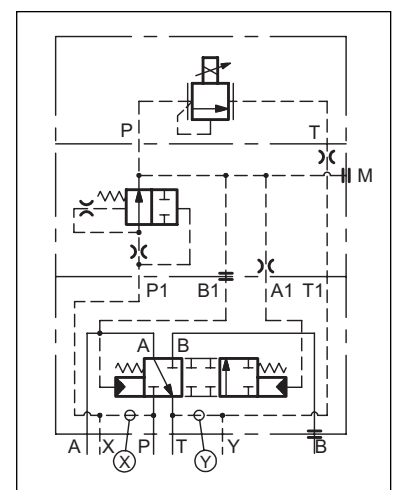
#### OPERATING PRINCIPLE



- The DZCE\* are pilot operated directional control valves with electric proportional control and mounting interface in compliance with ISO 4401 (CETOP RP121H) standards.
- Those valves act as pressure reducing valves that, besides reducing the pressure from line P to user A, allow the flow to return from user A to discharge T when a pressure greater than the set value is generated in the downstream circuit (user A) (a typical case of hydraulic counterweight or load balancing)
- The pressure can be modulated continuously in proportion to the current supplied to the solenoid.
- They can be controlled directly by a current control supply unit or by means of the relative electronic control units to exploit valve performance to the full
- They are available in CETOP P05, ISO 4401-07 (CETOP 07) and ISO 4401-08 (CETOP 08) sizes.
- Every size can be supplied with different controlled flow rates, up to 500 l/min.

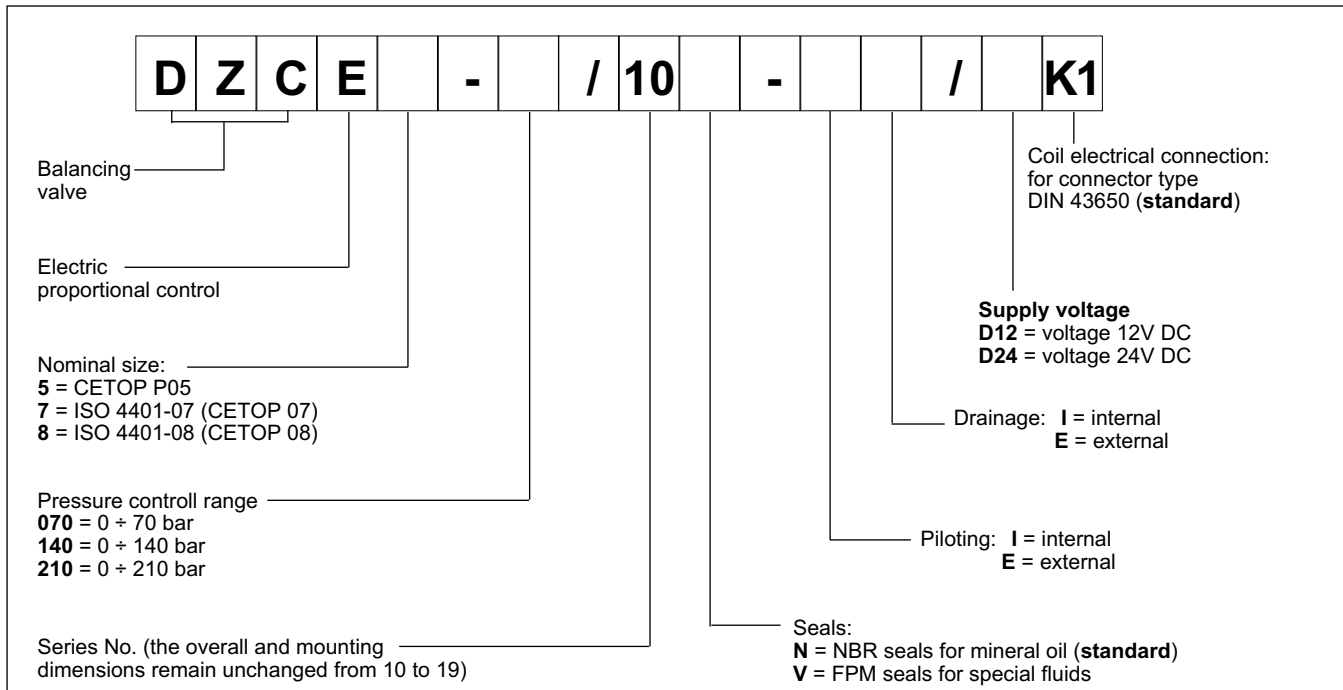
<b>PERFORMANCES</b> (obtained with mineral oil with viscosity of 36 cSt at 50°C and electronic control cards)		<b>DZCE5</b>	<b>DZCE7</b>	<b>DZCE8</b>
Maximum operating pressure:	bar	350		
Maximum flow	l/min	150	300	500
Piloting pressure needed	l/min	1,4		
Step response		see paragraph 8		
Hysteresis	% of Q <sub>max</sub>	< 4%		
Repeatability	% of Q <sub>max</sub>	< ±2%		
Electrical characteristic		see paragraph 7		
Ambient temperature range	°C	-10 / +50		
Fluid temperature range	°C	-20 / +80		
Fluid viscosity range	cSt	10 ÷ 400		
Fluid contamination degree	According to ISO 4406:1999 class 18/16/13			
Recommended viscosity	cSt	25		
Mass: single solenoid valve	kg	7,5	9,7	16
double solenoid valve				

#### HYDRAULIC SYMBOL



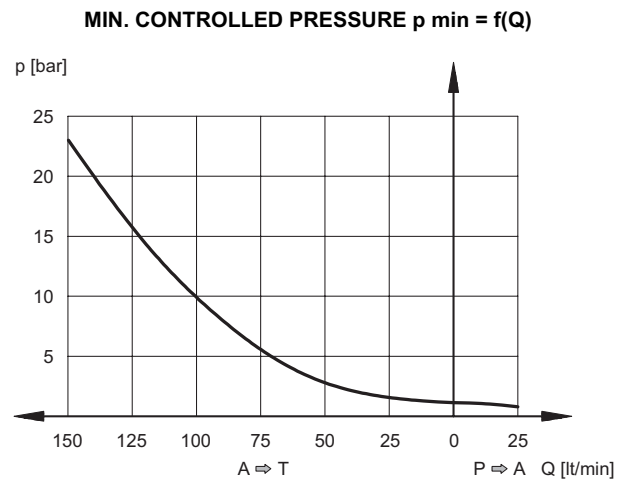
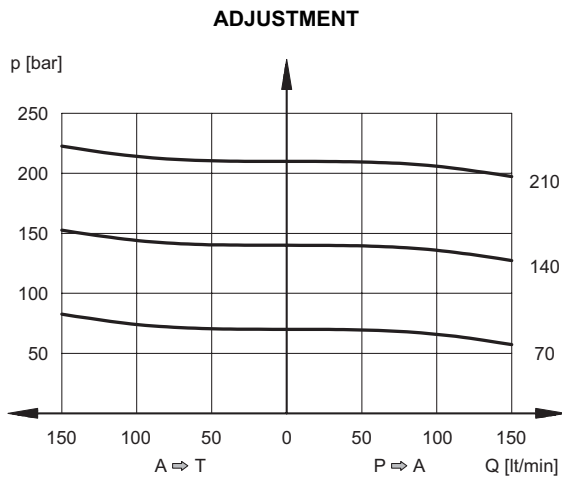


## 1 - IDENTIFICATION CODE

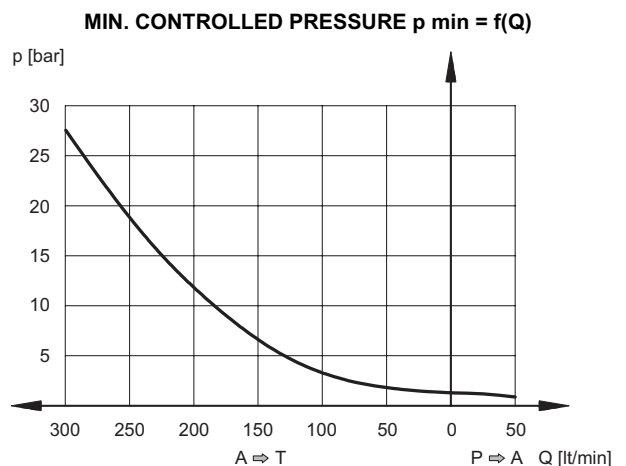
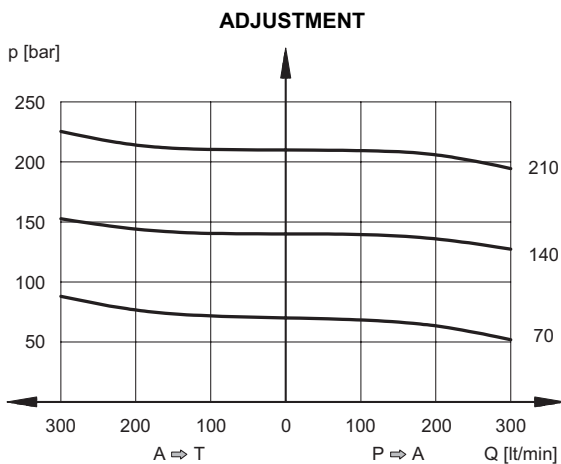


## 2 - CHARACTERISTIC CURVES (obtained with mineral oil with viscosity of 36 cSt at 50°C and electronic control cards)

### 2.1 - Characteristic curves DZCE5



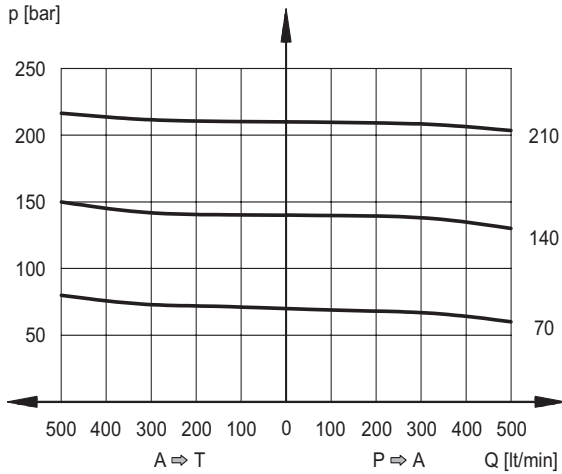
### 2.2 - Characteristic curves DZCE7



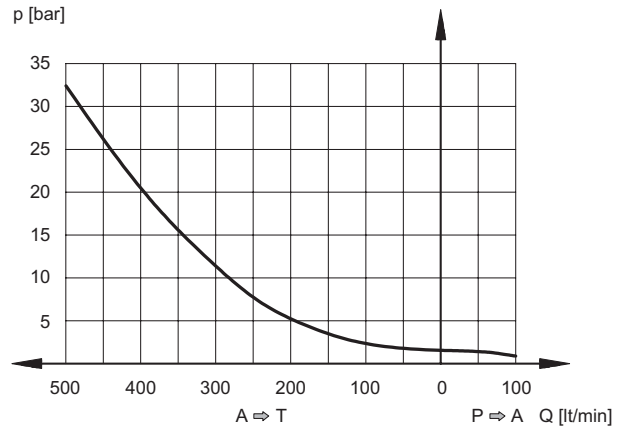


**2.3 - Characteristic curve DZCE8**

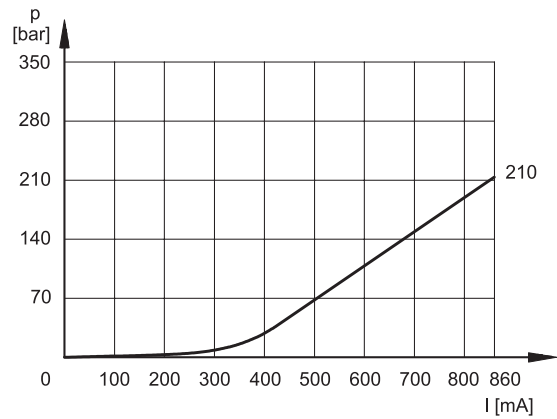
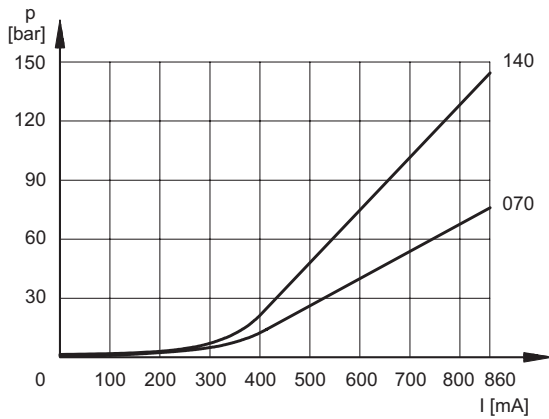
**ADJUSTMENT**



**MIN. CONTROLLED PRESSURE  $p_{min} = f(Q)$**



**2.4 - Pressure control  $p = f(I)$  DZCE5, DZCE7 and DZCE8**



**3 - HYDRAULIC FLUIDS**

Use mineral oil-based hydraulic fluids HL or HM type, according to ISO 6743-4. For these fluids, use NBR seals (code N). For fluids HFDR type (phosphate esters) use FPM seals (code V). For the use of other kinds of fluid such as HFA, HFB, HFC, please consult our technical department. Using fluids at temperatures higher than 80 °C causes a faster degradation of the fluid and of the seals characteristics. The fluid must be preserved in its physical and chemical characteristics.



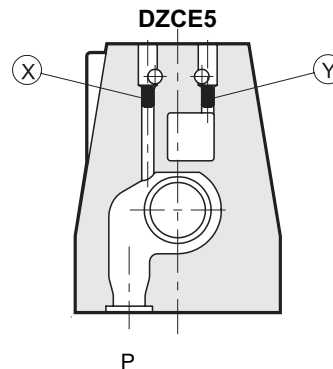
## 6 - PILOTING AND DRAINAGE

The DZCE\* valves are available with piloting and drainage, both internal and external. The version with external drainage allows a higher backpressure on the unloading.

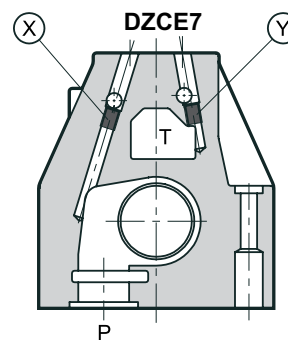
VALVE TYPE	Plug assembly	
	X	Y
<b>IE</b> INTERNAL PILOT AND EXTERNAL DRAIN	NO	YES
<b>II</b> INTERNAL PILOT AND INTERNAL DRAIN	NO	NO
<b>EE</b> EXTERNAL PILOT AND EXTERNAL DRAIN	YES	YES
<b>EI</b> EXTERNAL PILOT AND INTERNAL DRAIN	YES	NO

### PRESSURES (bar)

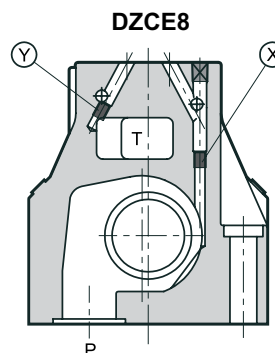
Pressure	MIN	MAX
Piloting pressure on X port	30	210 <b>(NOTE)</b>
Pressure on T port with internal drain	–	10
Pressure on T port with external drain	–	250



**X:** M5x6 plug for external pilot  
**Y:** M5x6 plug for external drain



**X:** M6x8 plug for external pilot  
**Y:** M6x8 plug for external drain



**X:** M6x8 plug for external pilot  
**Y:** M6x8 plug for external drain

## 5 - ELECTRICAL CHARACTERISTICS

### Proportional solenoid

The proportional solenoid comprises two parts: tube and coil.

The tube, screwed to the valve body, contains the armature which is designed to maintain friction to a minimum thereby reducing hysteresis.

The coil is mounted on the tube secured by means of a lock nut. It can be rotated through 360° depending on installation clearances.

<b>NOMINAL VOLTAGE</b>	V DC	<b>12</b>	<b>24</b>
<b>RESISTANCE (at 20°C)</b>	Ω	3.66	17.6
<b>MAXIMUM CURRENT</b>	A	1.88	0.86
<b>DUTY CYCLE</b>		100%	
<b>ELECTROMAGNETIC COMPATIBILITY (EMC)</b>		According to 89/336 CEE	
emissions	EN 50081-1		
immunity	EN 50082-2		
<b>CLASS OF PROTECTION:</b> Atmospheric agents (CEI EN 60529)		IP 65	



## 6 - - STEP RESPONSE (measured with mineral oil with viscosity of 36 cSt at 50°C with the relative electronic control units)

Step response is the time taken for the valve to reach 90% of the set pressure value following a step change of reference signal.

REFERENCE SIGNAL STEP	0 →100%	100→0%
response times [ms]		
DZCE5	100	70
DZCE7	100	50
DZCE8	100	50

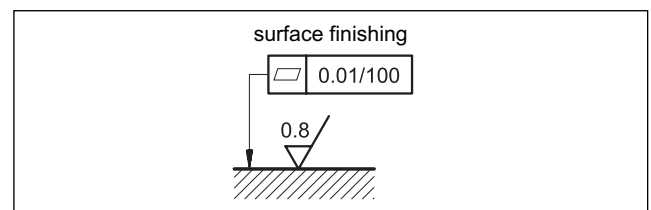
## 7 - INSTALLATION

We recommend to install the DZCE\* valve either in horizontal position, or vertical position with the solenoid downward. If the valve is installed in vertical position and with the solenoid upward, you must consider possible variations of the minimum controlled pressure, if compared to what is indicated in paragraph 2.

Ensure that there is no air in the hydraulic circuit. In particular applications, it can be necessary to vent the air entrapped in the solenoid tube, using the special drain screw and then ensure to screw it correctly.

Connect the valve T port directly to the tank. Add any backpressure value detected in the T line to the controlled pressure value. Maximum admissible backpressure in the T line, under operational conditions, is 2 bar.

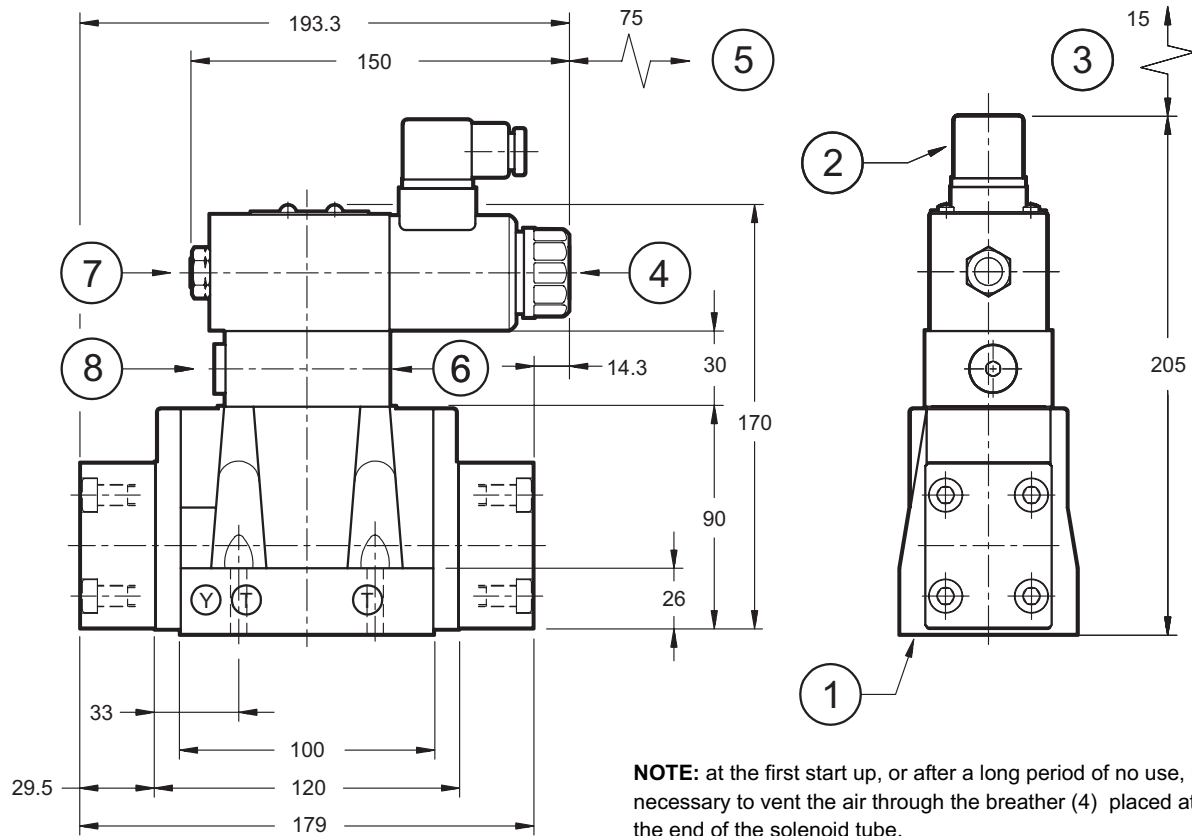
Valves are fixed by means of screws or tie rods on a flat surface with planarity and roughness equal to or better than those indicated in the relative symbols. If minimum values are not observed, fluid can easily leak between the valve and support surface.





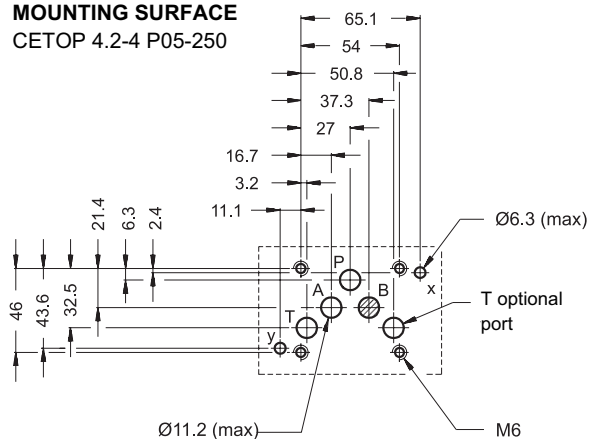
## 8 - DZCE5 OVERALL AND MOUNTING DIMENSIONS

dimensioni in mm



**NOTE:** at the first start up, or after a long period of no use, it is necessary to vent the air through the breather (4) placed at the end of the solenoid tube.

### MOUNTING SURFACE CETOP 4.2-4 P05-250

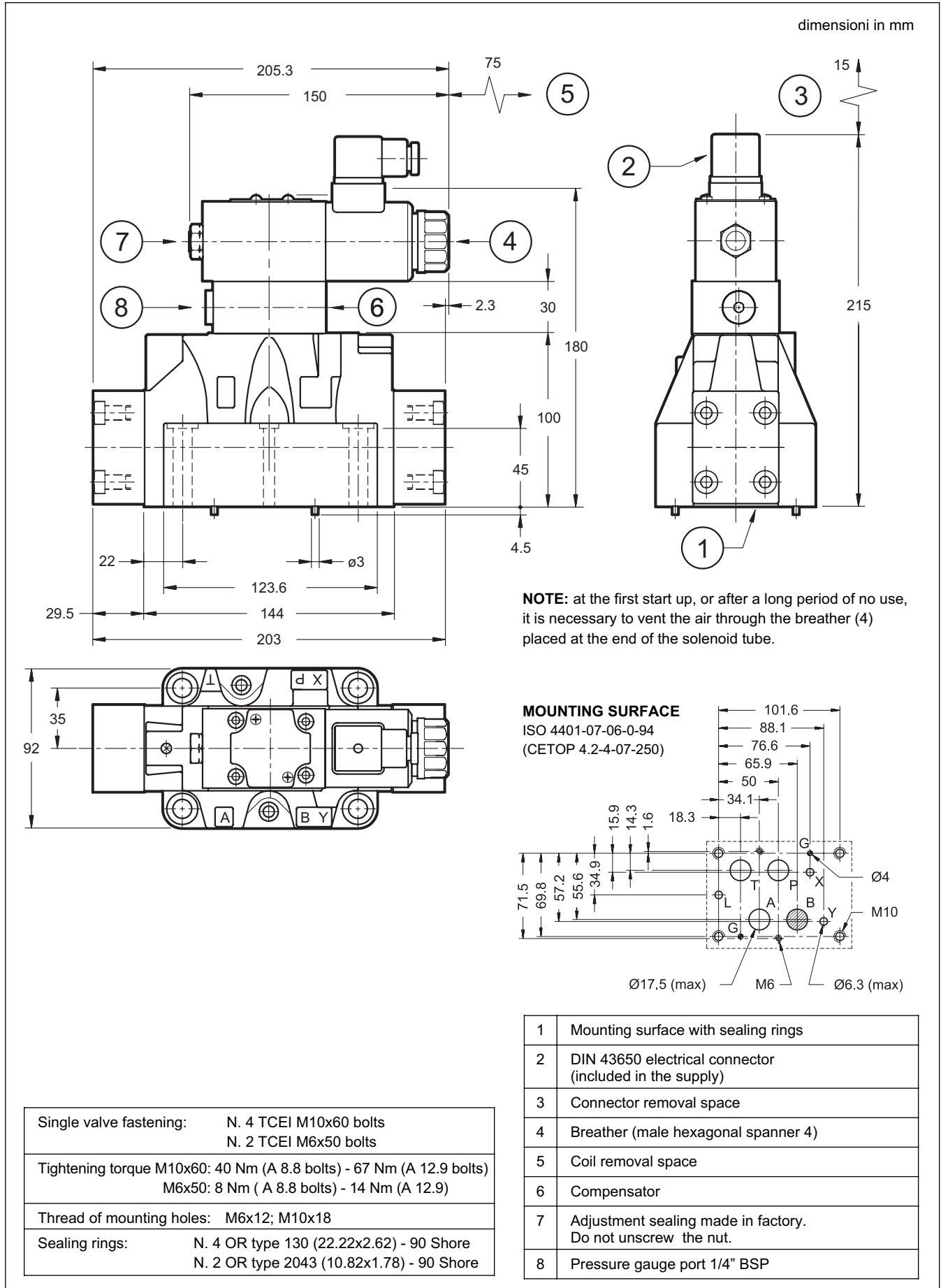


Valve fastening: N. 4 bolts TCEI M6x35
Tightening torque: 8 Nm (A 8.8 bolts) 14 Nm (A 12.9 bolts)
Thread of mounting holes: M6x10
Sealing rings: N. 5 OR type 2050 (12.42x1.78) - 90 Shore N. 2 OR type 2037 (9.25x1.78) - 90 Shore

1	Mounting surface with sealing rings
2	DIN 43650 electrical connector (included in the supply)
3	Connector removal space
4	Breather (male hexagonal spanner 4)
5	Coil removal space
6	Compensator
7	Adjustment sealing made in factory. Do not unscrew the nut.
8	Pressure gauge port 1/4" BSP

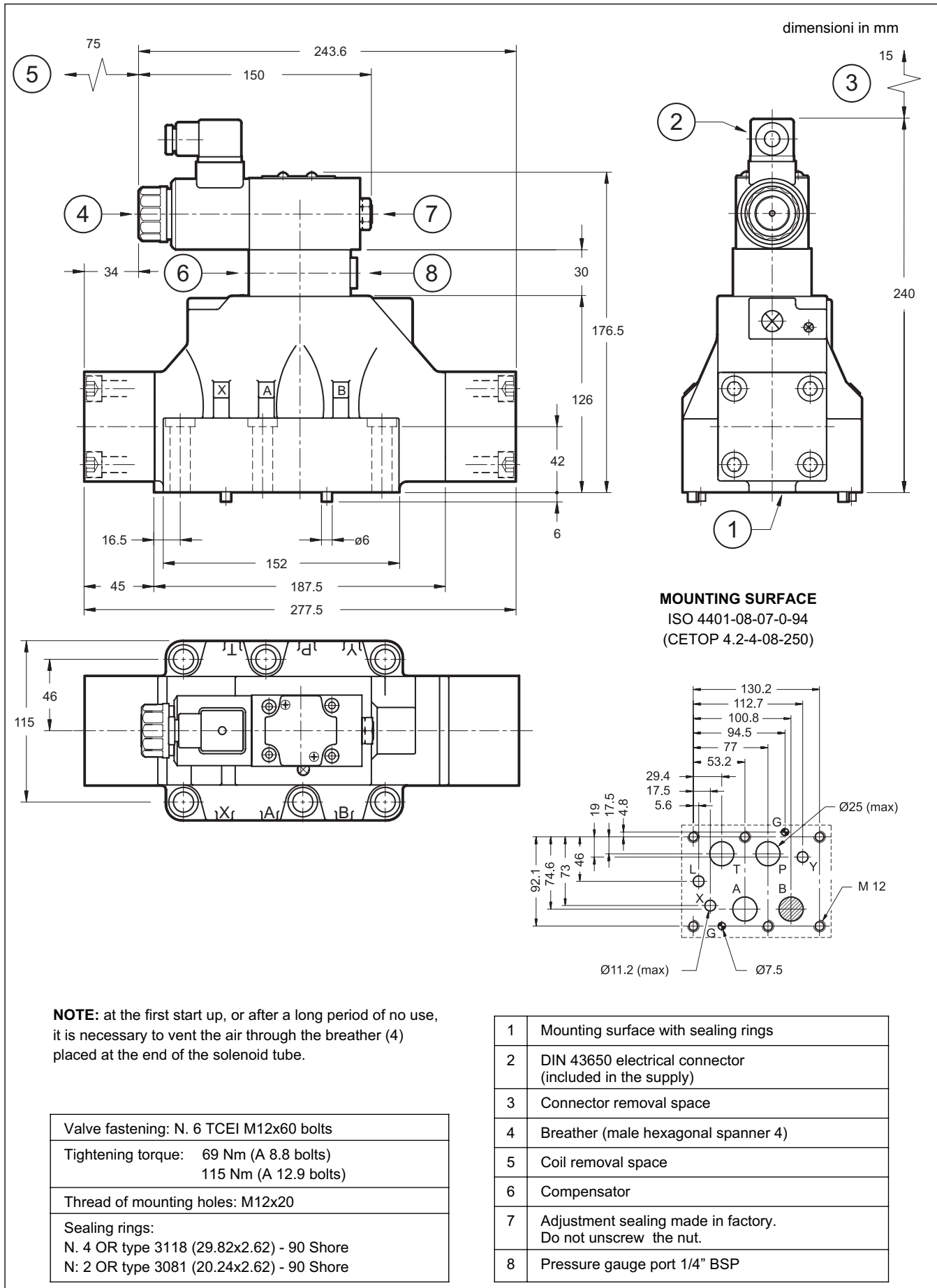


## 9 - DZCE7 OVERALL AND MOUNTING DIMENSIONS





## 10 - DZCE8 OVERALL AND MOUNTING DIMENSIONS





**11 - ELECTRONIC CONTROL UNITS**

<b>EDC-112</b>	for solenoid 24V DC	plug version	see cat.89 120
<b>EDM-M112</b>	for solenoid 24V DC	DIN EN 50022 rail mounting	see cat. 89 250
<b>EDM-M142</b>	for solenoid 12V DC		
<b>UEIK-11</b>	for solenoid 24V DC	Eurocard type	see cat. 89 300

**12 - SUBPLATES** (See catalogue 51 000)

	<b>DZCE5</b>	<b>DZCE7</b>	<b>DZCE8</b>
Model with rear ports	PME4-AI5G	PME07-AI6G	
Model with side ports	PME4-AL5G	PME07-AL6G	PME5-AL8G
Thread of ports:	P - T - A - B X - Y	3/4" BSP 1/4" BSP	1 1/2" BSP 1/4" BSP
		1" BSP 1/4" BSP	1" BSP 1/4" BSP



**DIPLOMATIC OLEODINAMICA SpA**  
20025 LEGNANO (MI) - P.le Bozzi, 1 / Via Edison  
Tel. 0331/472111 - Fax 0331/548328