



**DIPLOMATIC  
HYDRAULICS**

21 210/107 ED



# RM\*-W PRESSURE CONTROL VALVES

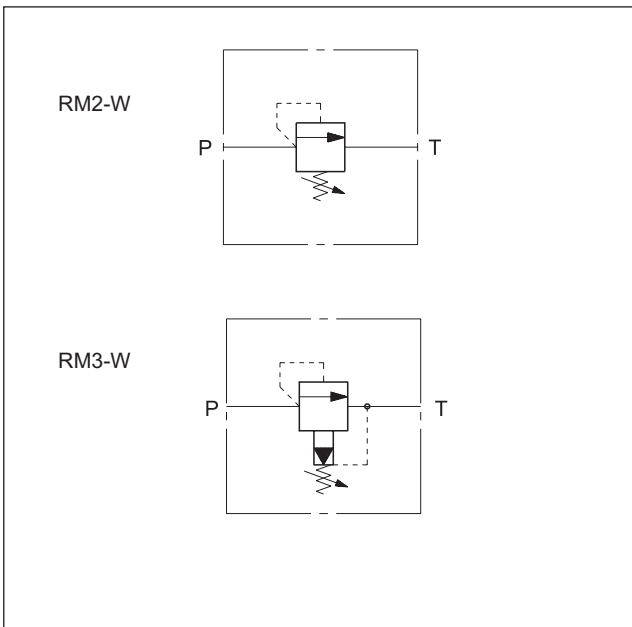
**RM2-W SERIES 31  
RM3-W SERIES 30**

## THREADED PORTS

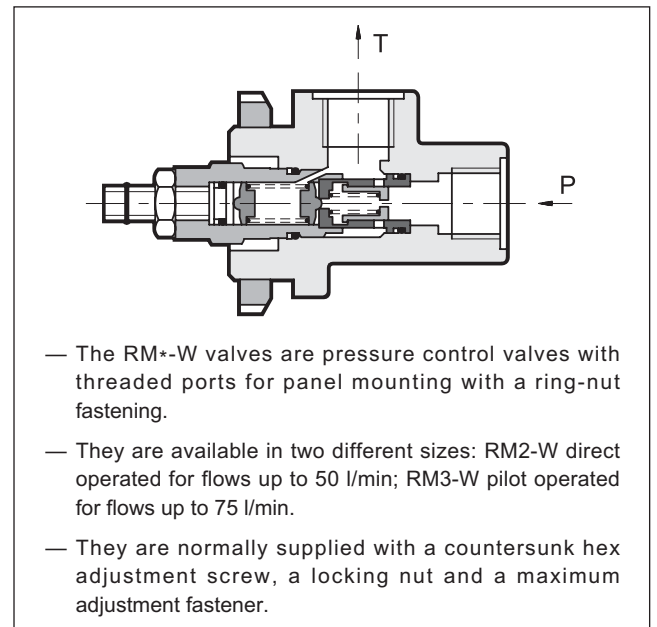
**p** max 350 bar

**Q** max (see table of performances)

## HYDRAULIC SYMBOLS



## OPERATING PRINCIPLE

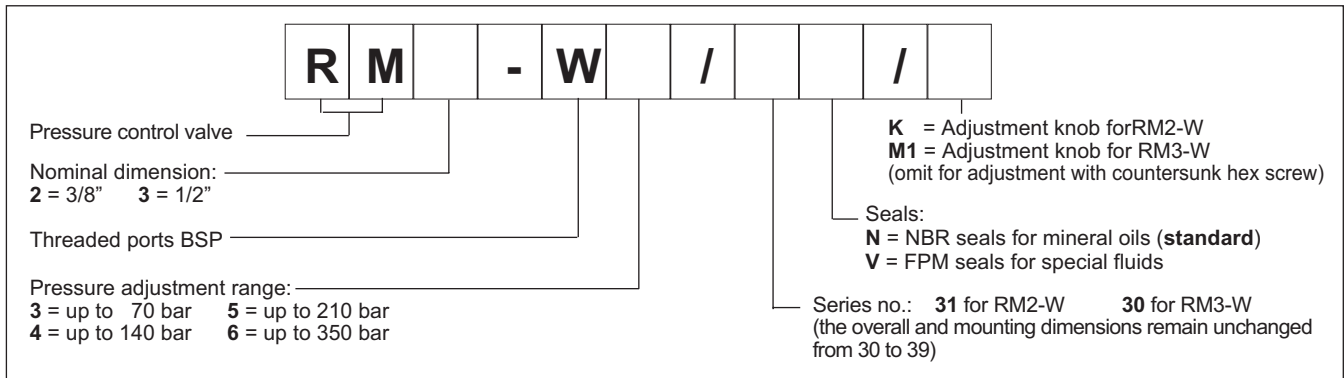


## PERFORMANCES (measured with mineral oil of viscosity 36 cSt at 50°C)

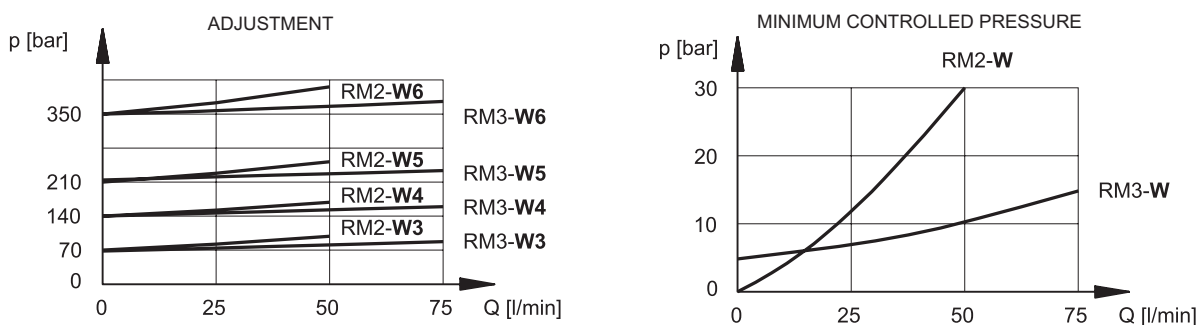
		RM2-W	RM3-W
Maximum operating pressure	bar	350	
Minimum controlled pressure		see diagram	
Maximum flow rate	l/min	50	75
Ambient temperature range	°C	-20 / +50	
Fluid temperature range	°C	-20 / +80	
Fluid viscosity range	cSt	10 ÷ 400	
Fluid contamination degree		according to ISO 4406:1999 class 20/18/15	
Recommended viscosity	cSt	25	
Mass	kg	0,9	



## 1 - IDENTIFICATION CODE



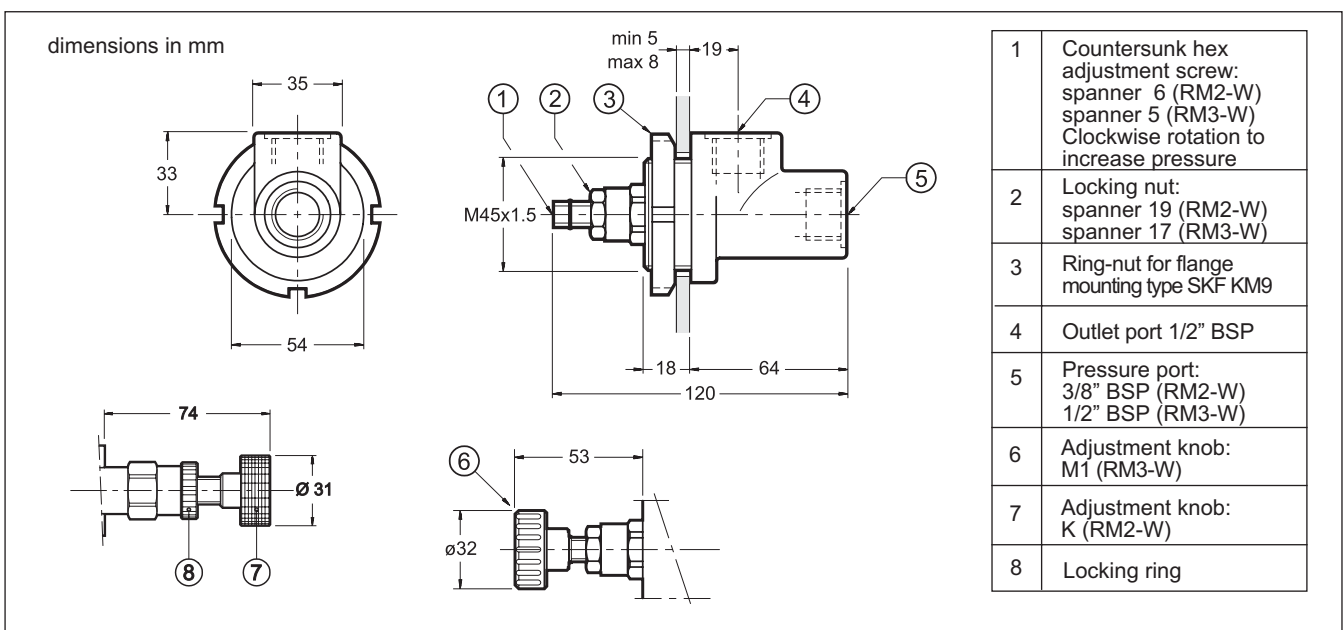
## 2 - CHARACTERISTIC CURVES (values obtained with viscosity of 36 cSt at 50°C)



## 3 - HYDRAULIC FLUIDS

Use mineral oil-based hydraulic fluids HL or HM type, according to ISO 6743-4. For these fluids, use NBR seals (code N). For fluids HFDR type (phosphate esters) use FPM seals (code V). For the use of other kinds of fluid such as HFA, HFB, HFC, please consult our technical department. Using fluids at temperatures higher than 80 °C causes a faster degradation of the fluid and of the seals characteristics. The fluid must be preserved in its physical and chemical characteristics.

## 4 - OVERALL AND MOUNTING DIMENSIONS



**DIPLOMATIC OLEODINAMICA SpA**  
 20025 LEGNANO (MI) - P.le Bozzi, 1 / Via Edison  
 Tel. 0331/472111-472236 - Fax 0331/548328